

CLEC1B Antibody (N-Term)

Purified Rabbit Polyclonal Antibody (Pab)
Catalog # AP22306a

Product Information

Application	WB, E
Primary Accession	Q9P126
Reactivity	Human
Host	Rabbit
Clonality	polyclonal
Isotype	Rabbit IgG
Clone Names	RB57434

Additional Information

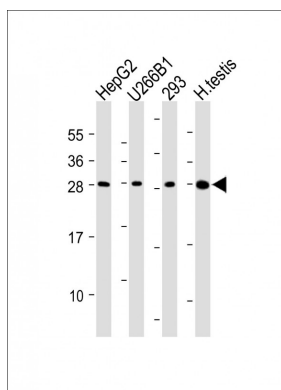
Other Names	C-type lectin domain family 1 member B, C-type lectin-like receptor 2, CLEC-2, CLEC1B, CLEC2
Target/Specificity	This CLEC1B antibody is generated from a rabbit immunized with a KLH conjugated synthetic peptide between 44-78 amino acids from the human region of human CLEC1B.
Dilution	WB~~1:2000 E~~Use at an assay dependent concentration.
Format	Purified polyclonal antibody supplied in PBS with 0.09% (W/V) sodium azide. This antibody is purified through a protein A column, followed by peptide affinity purification.
Storage	Maintain refrigerated at 2-8°C for up to 2 weeks. For long term storage store at -20°C in small aliquots to prevent freeze-thaw cycles.
Precautions	CLEC1B Antibody (N-Term) is for research use only and not for use in diagnostic or therapeutic procedures.

Protein Information

References

Colonna M.,et al.Eur. J. Immunol. 30:697-704(2000).
Chaipan C.,et al.J. Virol. 80:8951-8960(2006).
Clark H.F.,et al.Genome Res. 13:2265-2270(2003).
Scherer S.E.,et al.Nature 440:346-351(2006).
Suzuki-Inoue K.,et al.Blood 107:542-549(2006).

Images



All lanes : Anti-CLEC1B Antibody (N-Term) at dilution Lane 1: HepG2 whole cell lysate Lane 2: U266B1 whole cell lysate Lane 3: 293 whole cell lysate Lane 4: Human testis lysate Lysates/proteins at 20 μ g per lane. Secondary Goat Anti-Rabbit IgG, (H+L), Peroxidase conjugated at 1/10000 dilution. Predicted band size : 27kDa Blocking/Dilution buffer: 5% NFDM/TBST.

Please note: All products are 'FOR RESEARCH USE ONLY. NOT FOR USE IN DIAGNOSTIC OR THERAPEUTIC PROCEDURES'.