

# CKS2 Antibody (C-Term)

Purified Rabbit Polyclonal Antibody (Pab)

Catalog # AP22302b

## Product Information

---

|                          |                                                 |
|--------------------------|-------------------------------------------------|
| <b>Application</b>       | WB, FC, IF, E                                   |
| <b>Primary Accession</b> | <a href="#">P33552</a>                          |
| <b>Other Accession</b>   | <a href="#">Q2KJI1</a> , <a href="#">Q91879</a> |
| <b>Reactivity</b>        | Human, Mouse                                    |
| <b>Predicted</b>         | Bovine                                          |
| <b>Host</b>              | Rabbit                                          |
| <b>Clonality</b>         | polyclonal                                      |
| <b>Isotype</b>           | Rabbit IgG                                      |
| <b>Clone Names</b>       | RB57438                                         |
| <b>Calculated MW</b>     | 9860                                            |

## Additional Information

---

|                           |                                                                                                                                                                              |
|---------------------------|------------------------------------------------------------------------------------------------------------------------------------------------------------------------------|
| <b>Gene ID</b>            | 1164                                                                                                                                                                         |
| <b>Other Names</b>        | Cyclin-dependent kinases regulatory subunit 2, CKS-2, CKS2                                                                                                                   |
| <b>Target/Specificity</b> | This CKS2 antibody is generated from a rabbit immunized with a KLH conjugated synthetic peptide between 43-77 amino acids from the human region of human CKS2.               |
| <b>Dilution</b>           | WB~~1:2000 FC~~1:25 IF~~1:25 E~~Use at an assay dependent concentration.                                                                                                     |
| <b>Format</b>             | Purified polyclonal antibody supplied in PBS with 0.09% (W/V) sodium azide. This antibody is purified through a protein A column, followed by peptide affinity purification. |
| <b>Storage</b>            | Maintain refrigerated at 2-8°C for up to 2 weeks. For long term storage store at -20°C in small aliquots to prevent freeze-thaw cycles.                                      |
| <b>Precautions</b>        | CKS2 Antibody (C-Term) is for research use only and not for use in diagnostic or therapeutic procedures.                                                                     |

## Protein Information

---

|                 |                                                                                                                |
|-----------------|----------------------------------------------------------------------------------------------------------------|
| <b>Name</b>     | CKS2                                                                                                           |
| <b>Function</b> | Binds to the catalytic subunit of the cyclin dependent kinases and is essential for their biological function. |

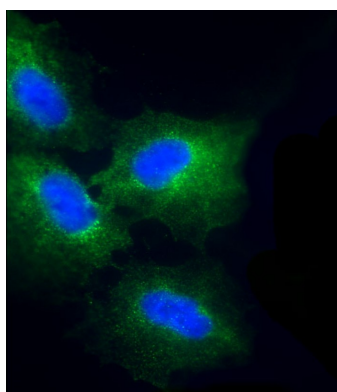
## Background

Binds to the catalytic subunit of the cyclin dependent kinases and is essential for their biological function.

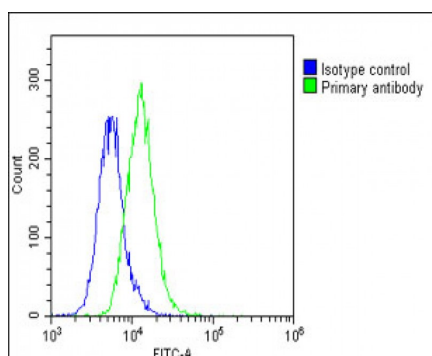
## References

Richardson H.E.,et al.Genes Dev. 4:1332-1344(1990).  
Kalnine N.,et al.Submitted (MAY-2003) to the EMBL/GenBank/DDBJ databases.  
Ebert L.,et al.Submitted (JUN-2004) to the EMBL/GenBank/DDBJ databases.  
Humphray S.J.,et al.Nature 429:369-374(2004).  
Mural R.J.,et al.Submitted (JUL-2005) to the EMBL/GenBank/DDBJ databases.

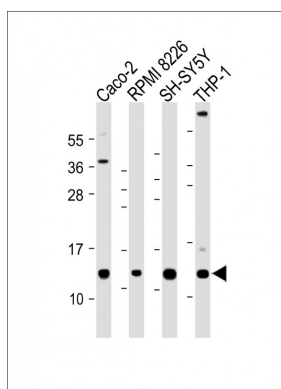
## Images



Immunofluorescent analysis of 4% paraformaldehyde-fixed, 0.1% Triton X-100 permeabilized A549 cells labeling CKS2 with AP22302b at 1/25 dilution, followed by DyLight® 488-conjugated goat anti-Rabbit IgG (OH191631) secondary antibody at 1/200 dilution (green). Immunofluorescence image showing cytoplasm staining on A549 cell line. Cytoplasmic actin is detected with DyLight® 554 Phalloidin (1186255) at 1/500 dilution (red). The nuclear counter stain is DAPI (blue).



Overlay histogram showing A549 cells stained with AP22302b (green line). The cells were fixed with 2% paraformaldehyde (10 min) and then permeabilized with 90% methanol for 10 min. The cells were then incubated in 2% bovine serum albumin to block non-specific protein-protein interactions followed by the antibody (AP22302b, 1:25 dilution) for 60 min at 37°C. The secondary antibody used was Goat-Anti-Rabbit IgG, DyLight® 488 Conjugated Highly Cross-Adsorbed (1583138) at 1/200 dilution for 40 min at 37°C. Isotype control antibody (blue line) was rabbit IgG1 (1 µg/1 × 10<sup>6</sup> cells) used under the same conditions. Acquisition of >10,000 events was performed.



All lanes : Anti-CKS2 Antibody (C-Term) at 1:2000 dilution  
Lane 1: Caco-2 whole cell lysate Lane 2: RPMI 8226 whole cell lysate Lane 3: SH-SY5Y whole cell lysate Lane 4: THP-1 whole cell lysate Lysates/proteins at 20 µg per lane.  
Secondary Goat Anti-Rabbit IgG, (H+L), Peroxidase conjugated at 1/10000 dilution. Predicted band size : 10 kDa Blocking/Dilution buffer: 5% NFDM/TBST.