

# STK25 Antibody

Purified Rabbit Polyclonal Antibody (Pab)  
Catalog # AP22291a

## Product Information

---

<b>Application</b>	WB, E
<b>Primary Accession</b>	<a href="#">O00506</a>
<b>Reactivity</b>	Human, Mouse
<b>Host</b>	Rabbit
<b>Clonality</b>	polyclonal
<b>Isotype</b>	Rabbit IgG
<b>Clone Names</b>	RB56852
<b>Calculated MW</b>	48112

## Additional Information

---

<b>Gene ID</b>	10494
<b>Other Names</b>	Serine/threonine-protein kinase 25, 2.7.11.1, Ste20-like kinase, Sterile 20/oxidant stress-response kinase 1, SOK-1, Ste20/oxidant stress response kinase 1, STK25, SOK1, YSK1
<b>Target/Specificity</b>	This STK25 antibody is generated from a rabbit immunized with a recombinant protein of human STK25.
<b>Dilution</b>	WB~1:2000 E~Use at an assay dependent concentration.
<b>Format</b>	Purified polyclonal antibody supplied in PBS with 0.09% (W/V) sodium azide. This antibody is purified through a protein A column, followed by peptide affinity purification.
<b>Storage</b>	Maintain refrigerated at 2-8°C for up to 2 weeks. For long term storage store at -20°C in small aliquots to prevent freeze-thaw cycles.
<b>Precautions</b>	STK25 Antibody is for research use only and not for use in diagnostic or therapeutic procedures.

## Protein Information

---

<b>Name</b>	STK25 ( <a href="#">HGNC:11404</a> )
<b>Synonyms</b>	SOK1, YSK1
<b>Function</b>	Oxidant stress-activated serine/threonine kinase that may play a role in the response to environmental stress. Targets to the Golgi apparatus where it appears to regulate protein transport events, cell adhesion, and polarity

complexes important for cell migration. Part of the striatin-interacting phosphatase and kinase (STRIPAK) complexes. STRIPAK complexes have critical roles in protein (de)phosphorylation and are regulators of multiple signaling pathways including Hippo, MAPK, nuclear receptor and cytoskeleton remodeling. Different types of STRIPAK complexes are involved in a variety of biological processes such as cell growth, differentiation, apoptosis, metabolism and immune regulation (PubMed:[18782753](#)).

#### Cellular Location

Cytoplasm. Golgi apparatus. Note=Localizes to the Golgi apparatus

#### Tissue Location

Ubiquitously expressed. Highest levels are found in testis, large intestine, brain and stomach followed by heart and lung

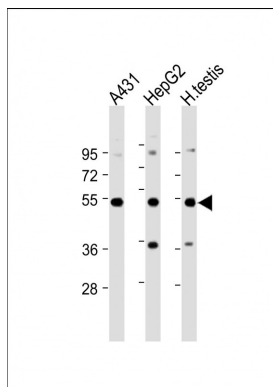
## Background

Oxidant stress-activated serine/threonine kinase that may play a role in the response to environmental stress. Targets to the Golgi apparatus where it appears to regulate protein transport events, cell adhesion, and polarity complexes important for cell migration.

## References

- Pombo C.M.,et al.EMBO J. 15:4537-4546(1996).  
Osada S.,et al.Oncogene 14:2047-2057(1997).  
Kalnine N.,et al.Submitted (OCT-2004) to the EMBL/GenBank/DDBJ databases.  
Ota T.,et al.Nat. Genet. 36:40-45(2004).  
Hillier L.W.,et al.Nature 434:724-731(2005).

## Images



All lanes : Anti-STK25 Antibody at 1:2000 dilution Lane 1: A431 whole cell lysate Lane 2: HepG2 whole cell lysate Lane 3: Human testis lysate Lysates/proteins at 20 µg per lane. Secondary Goat Anti-Rabbit IgG, (H+L), Peroxidase conjugated at 1/10000 dilution. Predicted band size : 48 kDa Blocking/Dilution buffer: 5% NFDM/TBST.

Please note: All products are 'FOR RESEARCH USE ONLY. NOT FOR USE IN DIAGNOSTIC OR THERAPEUTIC PROCEDURES'.