

V5

Purified Rabbit Polyclonal Antibody (Pab)
Catalog # AP22142a

Product Information

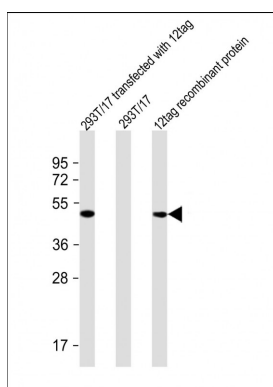
Application	WB, E
Primary Accession	NA
Host	Rabbit
Clonality	polyclonal
Isotype	Rabbit IgG
Clone Names	RB55985

Additional Information

Target/Specificity	This antibody is generated from a rabbit immunized with a KLH conjugated synthetic peptide between NA amino acids from human.
Dilution	WB~~1:2000 E~~Use at an assay dependent concentration.
Format	Purified polyclonal antibody supplied in PBS with 0.09% (W/V) sodium azide. This antibody is purified through a protein A column, followed by peptide affinity purification.
Storage	Maintain refrigerated at 2-8°C for up to 2 weeks. For long term storage store at -20°C in small aliquots to prevent freeze-thaw cycles.
Precautions	V5 is for research use only and not for use in diagnostic or therapeutic procedures.

Protein Information

Images



All lanes : Anti-GIT1 Antibody at 1:1000 dilution Lane 1: 293T/17 transfected with 12 tag lysate Lane 2: 293T/17 whole cell lysate Lane 3: 12 tag recombinant protein Lysates/proteins at 20 µg per lane. Secondary Goat Anti-Rabbit IgG, (H+L), Peroxidase conjugated at 1/10000 dilution. Predicted band size :45-50 kDa Blocking/Dilution buffer: 5% NFDM/TBST.

Please note: All products are 'FOR RESEARCH USE ONLY. NOT FOR USE IN DIAGNOSTIC OR THERAPEUTIC PROCEDURES'.