

RSL1D1 Antibody (C-Term)

Purified Rabbit Polyclonal Antibody (Pab)

Catalog # AP22027b

Product Information

Application	WB, E
Primary Accession	O76021
Other Accession	Q5RCE6
Reactivity	Human
Host	Rabbit
Clonality	polyclonal
Isotype	Rabbit IgG
Clone Names	RB54867
Calculated MW	54973

Additional Information

Gene ID	26156
Other Names	Ribosomal L1 domain-containing protein 1, CATX-11, Cellular senescence-inhibited gene protein, Protein PBK1, RSL1D1
Target/Specificity	This RSL1D1 antibody is generated from a rabbit immunized with a KLH conjugated synthetic peptide between 455-485 amino acids from human RSL1D1.
Dilution	WB~~1:2000 E~~Use at an assay dependent concentration.
Format	Purified polyclonal antibody supplied in PBS with 0.09% (W/V) sodium azide. This antibody is purified through a protein A column, followed by peptide affinity purification.
Storage	Maintain refrigerated at 2-8°C for up to 2 weeks. For long term storage store at -20°C in small aliquots to prevent freeze-thaw cycles.
Precautions	RSL1D1 Antibody (C-Term) is for research use only and not for use in diagnostic or therapeutic procedures.

Protein Information

Name	RSL1D1
Synonyms	CATX11, CSIG {ECO:0000303 PubMed:1867864}
Function	Regulates cellular senescence through inhibition of PTEN translation. Acts as a pro-apoptotic regulator in response to DNA damage.

Cellular Location Nucleus, nucleolus. Note=Colocalizes with ING1 in the nucleolus after UV stress.

Tissue Location Expressed at high intensities in the heart, skeletal muscle, and placenta.

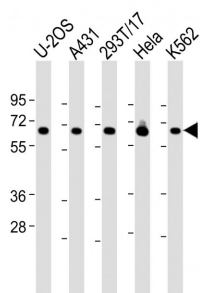
Background

Regulates cellular senescence through inhibition of PTEN translation. Acts as a pro-apoptotic regulator in response to DNA damage.

References

Huch G.,et al.Placenta 19:557-567(1998).
Petroziello J.,et al.Oncogene 23:7734-7745(2004).
Guo S.-Z.,et al.Submitted (SEP-2002) to the EMBL/GenBank/DDBJ databases.
Ota T.,et al.Nat. Genet. 36:40-45(2004).
Martin J.,et al.Nature 432:988-994(2004).

Images



All lanes : Anti-RSL1D1 Antibody (C-Term) at 1:2000 dilution Lane 1: U-2OS whole cell lysate Lane 2: A431 whole cell lysate Lane 3: 293T/17 whole cell lysate Lane 4: HeLa whole cell lysate Lane 5: K562 whole cell lysate Lysates/proteins at 20 µg per lane. Secondary Goat Anti-Rabbit IgG, (H+L), Peroxidase conjugated at 1/10000 dilution. Predicted band size : 55 kDa Blocking/Dilution buffer: 5% NFDM/TBST.

Please note: All products are 'FOR RESEARCH USE ONLY. NOT FOR USE IN DIAGNOSTIC OR THERAPEUTIC PROCEDURES'.