

# COL4A3 Antibody (N-Term)

Purified Rabbit Polyclonal Antibody (Pab)  
Catalog # AP21945a

## Product Information

---

<b>Application</b>	WB, E
<b>Primary Accession</b>	<a href="#">Q01955</a>
<b>Reactivity</b>	Human
<b>Host</b>	Rabbit
<b>Clonality</b>	polyclonal
<b>Isotype</b>	Rabbit IgG
<b>Clone Names</b>	RB54513
<b>Calculated MW</b>	161813

## Additional Information

---

<b>Gene ID</b>	1285
<b>Other Names</b>	Collagen alpha-3(IV) chain, Goodpasture antigen, Tumstatin, COL4A3
<b>Target/Specificity</b>	This COL4A3 antibody is generated from a rabbit immunized with a KLH conjugated synthetic peptide between 141-173 amino acids from human COL4A3.
<b>Dilution</b>	WB~1:1000 E~Use at an assay dependent concentration.
<b>Format</b>	Purified polyclonal antibody supplied in PBS with 0.09% (W/V) sodium azide. This antibody is purified through a protein A column, followed by peptide affinity purification.
<b>Storage</b>	Maintain refrigerated at 2-8°C for up to 2 weeks. For long term storage store at -20°C in small aliquots to prevent freeze-thaw cycles.
<b>Precautions</b>	COL4A3 Antibody (N-Term) is for research use only and not for use in diagnostic or therapeutic procedures.

## Protein Information

---

<b>Name</b>	COL4A3
<b>Function</b>	Type IV collagen is the major structural component of glomerular basement membranes (GBM), forming a 'chicken-wire' meshwork together with laminins, proteoglycans and entactin/nidogen.
<b>Cellular Location</b>	Secreted, extracellular space, extracellular matrix, basement membrane. Note=Colocalizes with COL4A4 and COL4A5 in GBM, tubular basement

membrane (TBM) and synaptic basal lamina (BL)

## Tissue Location

Alpha 3 and alpha 4 type IV collagens are colocalized and present in kidney, eye, basement membranes of lens capsule, cochlea, lung, skeletal muscle, aorta, synaptic fibers, fetal kidney and fetal lung. PubMed:8083201 reports similar levels of expression of alpha 3 and alpha 4 type IV collagens in kidney, but PubMed:7523402 reports that in kidney levels of alpha 3 type IV collagen are significantly lower than those of alpha 4 type IV collagen. According to PubMed:8083201, alpha 3 type IV collagen is not detected in heart, brain, placenta, liver, pancreas, extrasynaptic muscle fibers, endoneurial and perineurial nerves, fetal brain, fetal heart and fetal liver. According to PubMed:7523402, alpha 3 type IV collagen is strongly expressed in pancreas, neuroretina and calvaria and not expressed in adrenal, ileum and skin. Isoform 1 and isoform 3 are strongly expressed in kidney, lung, suprarenal capsule, muscle and spleen, in each of these tissues isoform 1 is more abundant than isoform 3. Isoform 1 and isoform 3 are expressed at low levels in artery, fat, pericardium and peripheral nerve, but not in placenta, mesangium, skin, pleura and cultured umbilical endothelial cells

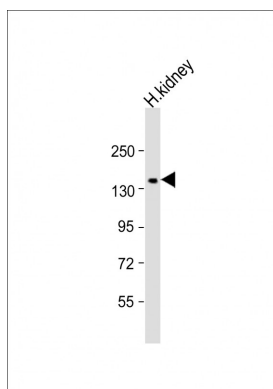
## Background

Type IV collagen is the major structural component of glomerular basement membranes (GBM), forming a 'chicken-wire' meshwork together with laminins, proteoglycans and entactin/nidogen.

## References

- Mariyama M., et al. *J. Biol. Chem.* 269:23013-23017(1994).  
Leinonen A., et al. Submitted (OCT-1998) to the EMBL/GenBank/DDBJ databases.  
Heidet L., et al. *J. Am. Soc. Nephrol.* 12:97-106(2001).  
Hillier L.W., et al. *Nature* 434:724-731(2005).  
Momota R., et al. *FEBS Lett.* 424:11-16(1998).

## Images



Anti-COL4A3 Antibody (N-Term) at 1:1000 dilution + kidney lysate Lysates/proteins at 20 µg per lane. Secondary Goat Anti-Rabbit IgG, (H+L), Peroxidase conjugated at 1/10000 dilution. Predicted band size : 162 kDa Blocking/Dilution buffer: 5% NFDM/TBST.

Please note: All products are 'FOR RESEARCH USE ONLY. NOT FOR USE IN DIAGNOSTIC OR THERAPEUTIC PROCEDURES'.