

# THRB Antibody (N-Term)

Purified Rabbit Polyclonal Antibody (Pab)

Catalog # AP21937a

## Product Information

---

<b>Application</b>	WB, E
<b>Primary Accession</b>	<a href="#">P10828</a>
<b>Reactivity</b>	Human
<b>Host</b>	Rabbit
<b>Clonality</b>	polyclonal
<b>Isotype</b>	Rabbit IgG
<b>Clone Names</b>	RB54428
<b>Calculated MW</b>	52788

## Additional Information

---

<b>Gene ID</b>	7068
<b>Other Names</b>	Thyroid hormone receptor beta, Nuclear receptor subfamily 1 group A member 2, c-erbA-2, c-erbA-beta, THRB, ERBA2, NR1A2, THR1
<b>Target/Specificity</b>	This THRB antibody is generated from a rabbit immunized with a KLH conjugated synthetic peptide between 23-55 amino acids from human THRB.
<b>Dilution</b>	WB~~1:2000 E~~Use at an assay dependent concentration.
<b>Format</b>	Purified polyclonal antibody supplied in PBS with 0.09% (W/V) sodium azide. This antibody is purified through a protein A column, followed by peptide affinity purification.
<b>Storage</b>	Maintain refrigerated at 2-8°C for up to 2 weeks. For long term storage store at -20°C in small aliquots to prevent freeze-thaw cycles.
<b>Precautions</b>	THRB Antibody (N-Term) is for research use only and not for use in diagnostic or therapeutic procedures.

## Protein Information

---

<b>Name</b>	THRB
<b>Synonyms</b>	ERBA2, NR1A2, THR1
<b>Function</b>	Nuclear hormone receptor that can act as a repressor or activator of transcription. High affinity receptor for thyroid hormones, including triiodothyronine and thyroxine.

Cellular Location

Nucleus.

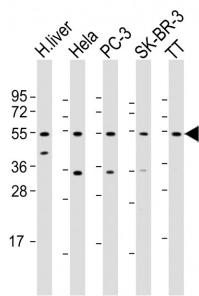
Background

Nuclear hormone receptor that can act as a repressor or activator of transcription. High affinity receptor for thyroid hormones, including triiodothyronine and thyroxine.

References

Weinberger C.,et al.Cold Spring Harb. Symp. Quant. Biol. 51:759-772(1986).  
Weinberger C.,et al.Nature 324:641-646(1986).  
Sakurai A.,et al.Mol. Cell. Endocrinol. 71:83-91(1990).  
Ota T.,et al.Nat. Genet. 36:40-45(2004).  
Muzny D.M.,et al.Nature 440:1194-1198(2006).

Images



All lanes : Anti-THRB Antibody (N-Term) at 1:2000 dilution  
Lane 1: human liver lysate Lane 2: Hela whole cell lysate  
Lane 3: PC-3 whole cell lysate Lane 4: SK-BR-3 whole cell lysate Lane 5: TT whole cell lysate  
Lysates/proteins at 20 µg per lane. Secondary Goat Anti-Rabbit IgG, (H+L), Peroxidase conjugated at 1/10000 dilution. Predicted band size : 53 kDa  
Blocking/Dilution buffer: 5% NFDM/TBST.

Please note: All products are 'FOR RESEARCH USE ONLY. NOT FOR USE IN DIAGNOSTIC OR THERAPEUTIC PROCEDURES'.