

RNF139 Antibody (C-Term)

Purified Rabbit Polyclonal Antibody (Pab)

Catalog # AP21873b

Product Information

Application	WB, E
Primary Accession	Q8WU17
Other Accession	Q5RBT7
Reactivity	Human, Mouse
Host	Rabbit
Clonality	polyclonal
Isotype	Rabbit IgG
Clone Names	RB54248
Calculated MW	75994

Additional Information

Gene ID	11236
Other Names	E3 ubiquitin-protein ligase RNF139, 632-, RING finger protein 139, Translocation in renal carcinoma on chromosome 8 protein, RNF139 (HGNC:17023)
Target/Specificity	This RNF139 antibody is generated from a rabbit immunized with a KLH conjugated synthetic peptide between 604-636 amino acids from human RNF139.
Dilution	WB~~1:2000 E~~Use at an assay dependent concentration.
Format	Purified polyclonal antibody supplied in PBS with 0.09% (W/V) sodium azide. This antibody is purified through a protein A column, followed by peptide affinity purification.
Storage	Maintain refrigerated at 2-8°C for up to 2 weeks. For long term storage store at -20°C in small aliquots to prevent freeze-thaw cycles.
Precautions	RNF139 Antibody (C-Term) is for research use only and not for use in diagnostic or therapeutic procedures.

Protein Information

Name	RNF139 (HGNC:17023)
Function	E3-ubiquitin ligase; acts as a negative regulator of cell proliferation through mechanisms involving G2/M arrest and cell death (PubMed: 10500182 , PubMed: 12032852 , PubMed: 17016439). Required for MHC class I

ubiquitination in cells expressing the cytomegalovirus protein US2 before dislocation from the endoplasmic reticulum (ER) (PubMed:[19720873](#)). Affects SREBP processing by hindering the SREBP-SCAP complex translocation from the ER to the Golgi, thereby reducing SREBF2 target gene expression (PubMed:[19706601](#), PubMed:[20068067](#)). Involved in the sterol-accelerated degradation of HMGCR (PubMed:[22143767](#), PubMed:[23223569](#)). This is achieved through binding of RNF139 to INSIG1 and/or INSIG2 at the ER membrane (PubMed:[22143767](#)). In addition, interaction of RNF139 with AUP1 facilitates interaction of RNF139 with ubiquitin-conjugating enzyme UBE2G2 and ubiquitin ligase AMFR, leading to ubiquitination of HMGCR (PubMed:[23223569](#)). The ubiquitinated HMGCR is then released from the ER into the cytosol for subsequent destruction (PubMed:[22143767](#), PubMed:[23223569](#)). Required for INSIG1 ubiquitination (PubMed:[20068067](#)). May be required for EIF3 complex ubiquitination (PubMed:[20068067](#)).

Cellular Location

Endoplasmic reticulum membrane; Multi-pass membrane protein

Tissue Location

Highly expressed in testis, placenta and adrenal gland. Moderate expression in heart, brain, liver, skeletal muscle and pancreas, and low expression in lung and kidney

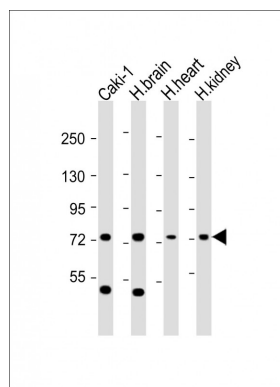
Background

E3-ubiquitin ligase; acts as a negative regulator of the cell proliferation through mechanisms involving G2/M arrest and cell death. Required for MHC class I ubiquitination in cells expressing the cytomegalovirus protein US2 before dislocation from the endoplasmic reticulum (ER). Affects SREBP processing by hindering the SREBP/SCAP complex translocation from the ER to the Golgi, thereby reducing SREBF2 target gene expression. Required for INSIG1 ubiquitination. May be required for EIF3 complex ubiquitination. May function as a signaling receptor.

References

Gemmill R.M.,et al.Proc. Natl. Acad. Sci. U.S.A. 95:9572-9577(1998).
 Ota T.,et al.Nat. Genet. 36:40-45(2004).
 Mural R.J.,et al.Submitted (JUL-2005) to the EMBL/GenBank/DDBJ databases.
 Lorick K.L.,et al.Proc. Natl. Acad. Sci. U.S.A. 96:11364-11369(1999).
 Gemmill R.M.,et al.Oncogene 21:3507-3516(2002).

Images



All lanes : Anti-RNF139 Antibody (C-Term) at 1:2000 dilution
 Lane 1: Caki-1 whole cell lysate
 Lane 2: human brain lysate
 Lane 3: human heart lysate
 Lane 4: human kidney lysate
 Lysates/proteins at 20 µg per lane.
 Secondary Goat Anti-Rabbit IgG, (H+L), Peroxidase conjugated at 1/10000 dilution. Predicted band size : 76 kDa
 Blocking/Dilution buffer: 5% NFDM/TBST.