

# COL11A1 Antibody (N-Term)

Purified Rabbit Polyclonal Antibody (Pab)

Catalog # AP21844a

## Product Information

---

<b>Application</b>	WB, E
<b>Primary Accession</b>	<a href="#">P12107</a>
<b>Reactivity</b>	Human, Rat, Mouse
<b>Host</b>	Rabbit
<b>Clonality</b>	polyclonal
<b>Isotype</b>	Rabbit IgG
<b>Clone Names</b>	RB53670
<b>Calculated MW</b>	181065

## Additional Information

---

<b>Gene ID</b>	1301
<b>Other Names</b>	Collagen alpha-1(XI) chain, COL11A1, COLL6
<b>Target/Specificity</b>	This COL11A1 antibody is generated from a rabbit immunized with a KLH conjugated synthetic peptide between 41-75 amino acids from human COL11A1.
<b>Dilution</b>	WB~~1:1000 E~~Use at an assay dependent concentration.
<b>Format</b>	Purified polyclonal antibody supplied in PBS with 0.09% (W/V) sodium azide. This antibody is purified through a protein A column, followed by peptide affinity purification.
<b>Storage</b>	Maintain refrigerated at 2-8°C for up to 2 weeks. For long term storage store at -20°C in small aliquots to prevent freeze-thaw cycles.
<b>Precautions</b>	COL11A1 Antibody (N-Term) is for research use only and not for use in diagnostic or therapeutic procedures.

## Protein Information

---

<b>Name</b>	COL11A1
<b>Synonyms</b>	COLL6
<b>Function</b>	May play an important role in fibrillogenesis by controlling lateral growth of collagen II fibrils.
<b>Cellular Location</b>	Secreted, extracellular space, extracellular matrix

## Tissue Location

Cartilage, placenta and some tumor or virally transformed cell lines. Isoforms using exon IIA or IIB are found in the cartilage while isoforms using only exon IIB are found in the tendon

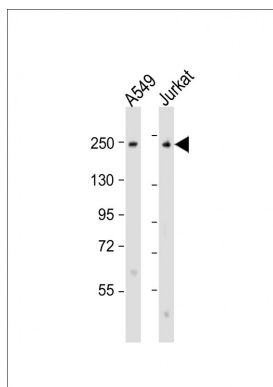
## Background

May play an important role in fibrillogenesis by controlling lateral growth of collagen II fibrils.

## References

Yoshioka H.,et al.J. Biol. Chem. 265:6423-6426(1990).  
Annunen S.,et al.Am. J. Hum. Genet. 65:974-983(1999).  
Gregory S.G.,et al.Nature 441:315-321(2006).  
Mural R.J.,et al.Submitted (SEP-2005) to the EMBL/GenBank/DDBJ databases.  
Bernard M.,et al.J. Biol. Chem. 263:17159-17166(1988).

## Images



All lanes : Anti-COL11A1 Antibody (N-Term) at 1:2000 dilution Lane 1: A549 whole cell lysate Lane 2: Jurkat whole cell lysate Lysates/proteins at 20 µg per lane. Secondary Goat Anti-Rabbit IgG, (H+L), Peroxidase conjugated at 1/10000 dilution. Predicted band size : 181 kDa Blocking/Dilution buffer: 5% NFDM/TBST.

## Citations

- [Cytoplasmic collagen XIαI as a prognostic biomarker in esophageal squamous cell carcinoma.](#)

Please note: All products are 'FOR RESEARCH USE ONLY. NOT FOR USE IN DIAGNOSTIC OR THERAPEUTIC PROCEDURES'.