

DLG1 Antibody (Center)

Purified Rabbit Polyclonal Antibody (Pab)

Catalog # AP21841c

Product Information

Application	WB, E
Primary Accession	Q12959
Reactivity	Human, Rat, Mouse
Host	Rabbit
Clonality	polyclonal
Isotype	Rabbit IgG
Clone Names	RB53955
Calculated MW	100455

Additional Information

Gene ID	1739
Other Names	Disks large homolog 1, Synapse-associated protein 97, SAP-97, SAP97, hDlg, DLG1
Target/Specificity	This DLG1 antibody is generated from a rabbit immunized with a KLH conjugated synthetic peptide between 643-673 amino acids from the Central region of human DLG1.
Dilution	WB~~1:2000 E~~Use at an assay dependent concentration.
Format	Purified polyclonal antibody supplied in PBS with 0.09% (W/V) sodium azide. This antibody is purified through a protein A column, followed by peptide affinity purification.
Storage	Maintain refrigerated at 2-8°C for up to 2 weeks. For long term storage store at -20°C in small aliquots to prevent freeze-thaw cycles.
Precautions	DLG1 Antibody (Center) is for research use only and not for use in diagnostic or therapeutic procedures.

Protein Information

Name	DLG1 (HGNC:2900)
Function	Essential multidomain scaffolding protein required for normal development (By similarity). Recruits channels, receptors and signaling molecules to discrete plasma membrane domains in polarized cells. Promotes epithelial cell layer barrier function via maintaining cell- cell adhesion (By similarity). May also play a role in adherens junction assembly, signal transduction, cell

proliferation, synaptogenesis and lymphocyte activation. Regulates the excitability of cardiac myocytes by modulating the functional expression of Kv4 channels. Functional regulator of Kv1.5 channel. During long-term depression in hippocampal neurons, it recruits ADAM10 to the plasma membrane (PubMed:[23676497](#)).

Cellular Location

Cell membrane; Peripheral membrane protein. Basolateral cell membrane. Endoplasmic reticulum membrane {ECO:0000250|UniProtKB:Q62696}. Postsynaptic density {ECO:0000250|UniProtKB:Q62696}. Synapse {ECO:0000250|UniProtKB:Q62696} Cell membrane, sarcolemma. Apical cell membrane. Cell junction. Cytoplasm Note=Colocalizes with EPB41 at regions of intercellular contacts Basolateral in epithelial cells (PubMed:12807908). May also associate with endoplasmic reticulum membranes. Mainly found in neurons soma, moderately found at postsynaptic densities (By similarity) {ECO:0000250|UniProtKB:Q62696, ECO:0000269|PubMed:10859302, ECO:0000269|PubMed:12807908, ECO:0000269|PubMed:8922391, ECO:0000269|PubMed:9192623}

Tissue Location

Abundantly expressed in atrial myocardium (at protein level). Expressed in lung fibroblasts, cervical epithelial and B-cells (at protein level). Expressed in the brain (at protein level) (PubMed:23676497). Widely expressed, with isoforms displaying different expression profiles.

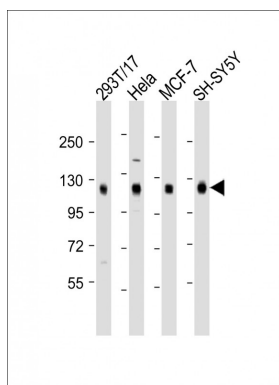
Background

Essential multidomain scaffolding protein required for normal development (By similarity). Recruits channels, receptors and signaling molecules to discrete plasma membrane domains in polarized cells. May play a role in adherens junction assembly, signal transduction, cell proliferation, synaptogenesis and lymphocyte activation. Regulates the excitability of cardiac myocytes by modulating the functional expression of Kv4 channels. Functional regulator of Kv1.5 channel.

References

Lue R.A.,et al.Proc. Natl. Acad. Sci. U.S.A. 91:9818-9822(1994).
Ota T.,et al.Nat. Genet. 36:40-45(2004).
Bechtel S.,et al.BMC Genomics 8:399-399(2007).
Muzny D.M.,et al.Nature 440:1194-1198(2006).
Mural R.J.,et al.Submitted (SEP-2005) to the EMBL/GenBank/DDBJ databases.

Images



All lanes : Anti-DLG1 Antibody (Center) at 1:2000 dilution
Lane 1: 293T/17 whole cell lysate Lane 2: HeLa whole cell lysate Lane 3: MCF-7 whole cell lysate Lane 4: SH-SY5Y whole cell lysate Lysates/proteins at 20 µg per lane.
Secondary Goat Anti-Rabbit IgG, (H+L), Peroxidase conjugated at 1/10000 dilution. Predicted band size : 100 kDa Blocking/Dilution buffer: 5% NFDM/TBST.

Please note: All products are 'FOR RESEARCH USE ONLY. NOT FOR USE IN DIAGNOSTIC OR THERAPEUTIC PROCEDURES'.