

DMRT2 Antibody (Center)

Purified Rabbit Polyclonal Antibody (Pab)

Catalog # AP21775c

Product Information

Application	WB, E
Primary Accession	Q9Y5R5
Reactivity	Human, Mouse
Host	Rabbit
Clonality	polyclonal
Isotype	Rabbit IgG
Clone Names	RB53639
Calculated MW	61814

Additional Information

Gene ID	10655
Other Names	Doublesex- and mab-3-related transcription factor 2, Doublesex-like 2 protein, DSXL-2, DMRT2, DSXL2
Target/Specificity	This DMRT2 antibody is generated from a rabbit immunized with a KLH conjugated synthetic peptide between 357-392 amino acids from the Central region of human DMRT2.
Dilution	WB~~1:2000 E~~Use at an assay dependent concentration.
Format	Purified polyclonal antibody supplied in PBS with 0.09% (W/V) sodium azide. This antibody is purified through a protein A column, followed by peptide affinity purification.
Storage	Maintain refrigerated at 2-8°C for up to 2 weeks. For long term storage store at -20°C in small aliquots to prevent freeze-thaw cycles.
Precautions	DMRT2 Antibody (Center) is for research use only and not for use in diagnostic or therapeutic procedures.

Protein Information

Name	DMRT2
Synonyms	DSXL2
Function	Transcriptional activator that directly regulates early activation of the myogenic determination gene MYF5 by binding in a sequence-specific manner to the early epaxial enhancer element of it. Involved in somitogenesis during

embryogenesis and somite development and differentiation into sclerotome and dermomyotome. Required for the initiation and/or maintenance of proper organization of the sclerotome, dermomyotome and myotome (By similarity).

Cellular Location Nucleus {ECO:0000255 | PROSITE-ProRule:PRU00070}.

Tissue Location Expressed in testis, kidney and skeletal muscle.

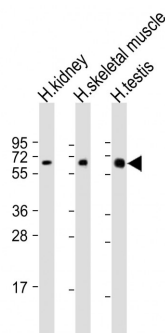
Background

Transcriptional activator that directly regulates early activation of the myogenic determination gene MYF5 by binding in a sequence-specific manner to the early epaxial enhancer element of it. Involved in somitogenesis during embryogenesis and somite development and differentiation into sclerotome and dermomyotome. Required for the initiation and/or maintenance of proper organization of the sclerotome, dermomyotome and myotome (By similarity).

References

Raymond C.S.,et al.Hum. Mol. Genet. 8:989-996(1999).
Ottolenghi C.,et al.Genomics 64:179-186(2000).
Calvari V.,et al.Genomics 65:203-212(2000).
Humphray S.J.,et al.Nature 429:369-374(2004).
Mural R.J.,et al.Submitted (SEP-2005) to the EMBL/GenBank/DDBJ databases.

Images



All lanes : Anti-DMRT2 Antibody (Center) at 1:2000 dilution Lane 1: human kidney lysate Lane 2: human skeletal muscle lysate Lane 3: human testis lysate Lysates/proteins at 20 µg per lane. Secondary Goat Anti-Rabbit IgG, (H+L), Peroxidase conjugated at 1/10000 dilution. Predicted band size : 62 kDa Blocking/Dilution buffer: 5% NFDM/TBST.

Please note: All products are 'FOR RESEARCH USE ONLY. NOT FOR USE IN DIAGNOSTIC OR THERAPEUTIC PROCEDURES'.