

LSM2 Antibody (C-Term)

Purified Rabbit Polyclonal Antibody (Pab)

Catalog # AP21749b

Product Information

Application	WB, IHC-P, E
Primary Accession	Q9Y333
Reactivity	Human, Mouse
Host	Rabbit
Clonality	polyclonal
Isotype	Rabbit IgG
Clone Names	RB53651
Calculated MW	10835

Additional Information

Gene ID	57819
Other Names	U6 snRNA-associated Sm-like protein LSm2, Protein G7b, Small nuclear ribonuclear protein D homolog, snRNP core Sm-like protein Sm-x5, LSM2, C6orf28, G7B
Target/Specificity	This LSM2 antibody is generated from a rabbit immunized with a KLH conjugated synthetic peptide between 55-89 amino acids from human LSM2.
Dilution	WB~~1:2000 IHC-P~~1:100~500 E~~Use at an assay dependent concentration.
Format	Purified polyclonal antibody supplied in PBS with 0.09% (W/V) sodium azide. This antibody is purified through a protein A column, followed by peptide affinity purification.
Storage	Maintain refrigerated at 2-8°C for up to 2 weeks. For long term storage store at -20°C in small aliquots to prevent freeze-thaw cycles.
Precautions	LSM2 Antibody (C-Term) is for research use only and not for use in diagnostic or therapeutic procedures.

Protein Information

Name	LSM2
Synonyms	C6orf28, G7B
Function	Plays a role in pre-mRNA splicing as component of the U4/U6- U5 tri-snRNP complex that is involved in spliceosome assembly, and as component of the precatalytic spliceosome (spliceosome B complex) (PubMed: 28781166). The

heptameric LSM2-8 complex binds specifically to the 3'-terminal U-tract of U6 snRNA (PubMed:[10523320](#)).

Cellular Location

Nucleus

Background

Binds specifically to the 3'-terminal U-tract of U6 snRNA. May be involved in pre-mRNA splicing.

References

Achsel T.,et al.EMBO J. 18:5789-5802(1999).

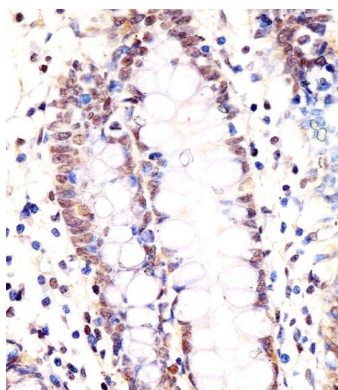
Olavesen M.G.,et al.Submitted (AUG-1999) to the EMBL/GenBank/DDBJ databases.

Schmarda A.,et al.Submitted (OCT-1999) to the EMBL/GenBank/DDBJ databases.

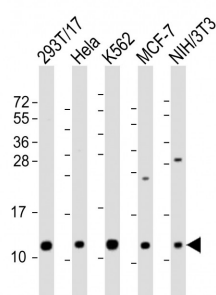
Xie T.,et al.Genome Res. 13:2621-2636(2003).

Shiina S.,et al.Submitted (SEP-1999) to the EMBL/GenBank/DDBJ databases.

Images



AP21749b staining LSM2 in human colon tissue sections by Immunohistochemistry (IHC-P - paraformaldehyde-fixed, paraffin-embedded sections). Tissue was fixed with formaldehyde and blocked with 3% BSA for 0.5 hour at room temperature; antigen retrieval was by heat mediation with a citrate buffer (pH6). Samples were incubated with primary antibody (1/25) for 1 hour at 37°C. A undiluted biotinylated goat polyvalent antibody was used as the secondary antibody.



All lanes : Anti-LSM2 Antibody (C-Term) at 1:2000 dilution
Lane 1: 293T/17 whole cell lysate Lane 2: HeLa whole cell lysate Lane 3: K562 whole cell lysate Lane 4: MCF-7 whole cell lysate Lane 5: NIH/3T3 whole cell lysate
Lysates/proteins at 20 µg per lane. Secondary Goat Anti-Rabbit IgG, (H+L), Peroxidase conjugated at 1/10000 dilution. Predicted band size : 11 kDa Blocking/Dilution buffer: 5% NFDM/TBST.

Please note: All products are 'FOR RESEARCH USE ONLY. NOT FOR USE IN DIAGNOSTIC OR THERAPEUTIC PROCEDURES'.