

# ROPN1 Antibody (Center)

Purified Rabbit Polyclonal Antibody (Pab)

Catalog # AP21743c

## Product Information

---

Application	WB, E
Primary Accession	<a href="#">Q9HAT0</a>
Reactivity	Human, Rat, Mouse
Host	Rabbit
Clonality	polyclonal
Isotype	Rabbit IgG
Clone Names	RB53560
Calculated MW	23893

## Additional Information

---

Gene ID	54763
Other Names	Ropporin-1A, Cancer/testis antigen 91, CT91, Rhophilin-associated protein 1A, ROPN1, ROPN1A
Target/Specificity	This ROPN1 antibody is generated from a rabbit immunized with a KLH conjugated synthetic peptide between 91-121 amino acids from the Central region of human ROPN1.
Dilution	WB~~1:2000 E~~Use at an assay dependent concentration.
Format	Purified polyclonal antibody supplied in PBS with 0.09% (W/V) sodium azide. This antibody is purified through a protein A column, followed by peptide affinity purification.
Storage	Maintain refrigerated at 2-8°C for up to 2 weeks. For long term storage store at -20°C in small aliquots to prevent freeze-thaw cycles.
Precautions	ROPN1 Antibody (Center) is for research use only and not for use in diagnostic or therapeutic procedures.

## Protein Information

---

Name	ROPN1
Synonyms	ROPN1A
Function	Important for male fertility. With ROPN1L, involved in fibrous sheath integrity and sperm motility, plays a role in PKA- dependent signaling processes required for spermatozoa capacitation.

<b>Cellular Location</b>	Cell projection, cilium, flagellum {ECO:0000250 UniProtKB:Q9ESG2}. Note=In the sperm tail, found in the principal piece and in the cytoplasmic droplet located at the distal end of the midpiece. Inner surface of the fibrous sheath {ECO:0000250 UniProtKB:Q9ESG2}
<b>Tissue Location</b>	Testis specific in adult. Overexpressed in hematologic tumor cells.

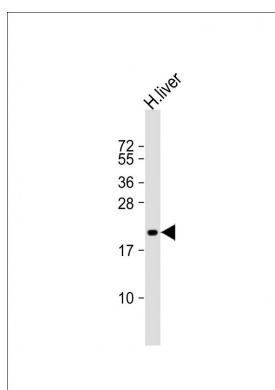
## References

---

Zhou Z.M.,et al.Submitted (AUG-2001) to the EMBL/GenBank/DDBJ databases.  
Bechtel S.,et al.BMC Genomics 8:399-399(2007).  
Mural R.J.,et al.Submitted (SEP-2005) to the EMBL/GenBank/DDBJ databases.  
Li Z.,et al.Int. J. Cancer 121:1507-1511(2007).

## Images

---



Anti-ROPN1 Antibody (Center) at 1:2000 dilution + human liver lysate Lysates/proteins at 20 µg per lane. Secondary Goat Anti-Rabbit IgG, (H+L), Peroxidase conjugated at 1/10000 dilution. Predicted band size : 24 kDa  
Blocking/Dilution buffer: 5% NFDM/TBST.

Please note: All products are 'FOR RESEARCH USE ONLY. NOT FOR USE IN DIAGNOSTIC OR THERAPEUTIC PROCEDURES'.