

TWF1 Antibody (Center)

Purified Rabbit Polyclonal Antibody (Pab)

Catalog # AP21741c

Product Information

Application	WB, E
Primary Accession	Q12792
Reactivity	Human, Rat, Mouse
Host	Rabbit
Clonality	polyclonal
Isotype	Rabbit IgG
Clone Names	RB53578
Calculated MW	40283

Additional Information

Gene ID	5756
Other Names	Twinfilin-1, Protein A6, Protein tyrosine kinase 9, TWF1, PTK9
Target/Specificity	This TWF1 antibody is generated from a rabbit immunized with a KLH conjugated synthetic peptide between 137-171 amino acids from the Central region of human TWF1.
Dilution	WB~~1:2000 E~~Use at an assay dependent concentration.
Format	Purified polyclonal antibody supplied in PBS with 0.09% (W/V) sodium azide. This antibody is purified through a protein A column, followed by peptide affinity purification.
Storage	Maintain refrigerated at 2-8°C for up to 2 weeks. For long term storage store at -20°C in small aliquots to prevent freeze-thaw cycles.
Precautions	TWF1 Antibody (Center) is for research use only and not for use in diagnostic or therapeutic procedures.

Protein Information

Name	TWF1
Synonyms	PTK9
Function	Actin-binding protein involved in motile and morphological processes. Inhibits actin polymerization, likely by sequestering G- actin. By capping the barbed ends of filaments, it also regulates motility. Seems to play an important role in clathrin-mediated endocytosis and distribution of endocytic

organelles (By similarity).

Cellular Location

Cytoplasm. Cytoplasm, cytoskeleton. Note=Diffuse cytoplasmic localization with perinuclear and G-actin-rich cortical actin structures sublocalization. Also found at membrane ruffles and cell-cell contacts (By similarity).

Tissue Location

Expressed at high levels in the colon, testis, ovary, prostate and lung. Expressed at lower levels in the brain, bladder and heart. Not detected in liver.

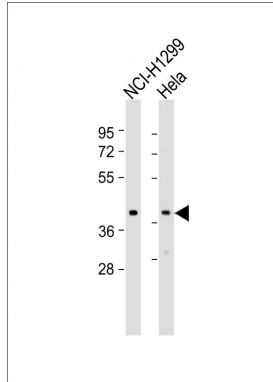
Background

Actin-binding protein involved in motile and morphological processes. Inhibits actin polymerization, likely by sequestering G-actin. By capping the barbed ends of filaments, it also regulates motility. Seems to play an important role in clathrin-mediated endocytosis and distribution of endocytic organelles (By similarity).

References

Beeler J.F.,et al.Mol. Cell. Biol. 14:982-988(1994).
Ota T.,et al.Nat. Genet. 36:40-45(2004).
Halleck A.,et al.Submitted (JUN-2004) to the EMBL/GenBank/DDBJ databases.
Kalnine N.,et al.Submitted (OCT-2004) to the EMBL/GenBank/DDBJ databases.
Totoki Y.,et al.Submitted (MAR-2005) to the EMBL/GenBank/DDBJ databases.

Images



All lanes : Anti-TWF1 Antibody (Center) at 1:2000 dilution
Lane 1: NCI-H1299 whole cell lysate Lane 2: HeLa whole cell lysate
Lysates/proteins at 20 µg per lane. Secondary Goat Anti-Rabbit IgG, (H+L), Peroxidase conjugated at 1/10000 dilution. Predicted band size : 40 kDa
Blocking/Dilution buffer: 5% NFDM/TBST.

Please note: All products are 'FOR RESEARCH USE ONLY. NOT FOR USE IN DIAGNOSTIC OR THERAPEUTIC PROCEDURES'.