

# CFI (light chain) Antibody (C-term)

Purified Rabbit Polyclonal Antibody (Pab)

Catalog # AP21688b

## Product Information

---

<b>Application</b>	WB, E
<b>Primary Accession</b>	<a href="#">P05156</a>
<b>Reactivity</b>	Human
<b>Host</b>	Rabbit
<b>Clonality</b>	polyclonal
<b>Isotype</b>	Rabbit IgG
<b>Clone Names</b>	RB48602
<b>Calculated MW</b>	65750

## Additional Information

---

<b>Gene ID</b>	3426
<b>Other Names</b>	Complement factor I, C3B/C4B inactivator, Complement factor I heavy chain, Complement factor I light chain, CFI, IF
<b>Target/Specificity</b>	This CFI (light chain) antibody is generated from a rabbit immunized with a KLH conjugated synthetic peptide between 447-482 amino acids from the C-terminal region of human CFI (light chain).
<b>Dilution</b>	WB~~1:2000 E~~Use at an assay dependent concentration.
<b>Format</b>	Purified polyclonal antibody supplied in PBS with 0.09% (W/V) sodium azide. This antibody is purified through a protein A column, followed by peptide affinity purification.
<b>Storage</b>	Maintain refrigerated at 2-8°C for up to 2 weeks. For long term storage store at -20°C in small aliquots to prevent freeze-thaw cycles.
<b>Precautions</b>	CFI (light chain) Antibody (C-term) is for research use only and not for use in diagnostic or therapeutic procedures.

## Protein Information

---

<b>Name</b>	CFI
<b>Synonyms</b>	IF
<b>Function</b>	Trypsin-like serine protease that plays an essential role in regulating the immune response by controlling all complement pathways. Inhibits these pathways by cleaving three peptide bonds in the alpha- chain of C3b and two

bonds in the alpha-chain of C4b thereby inactivating these proteins (PubMed:[17320177](#), PubMed:[7360115](#)). Essential cofactors for these reactions include factor H and C4BP in the fluid phase and membrane cofactor protein/CD46 and CR1 on cell surfaces (PubMed:[12055245](#), PubMed:[2141838](#), PubMed:[9605165](#)). The presence of these cofactors on healthy cells allows degradation of deposited C3b by CFI in order to prevent undesired complement activation, while in apoptotic cells or microbes, the absence of such cofactors leads to C3b-mediated complement activation and subsequent opsonization (PubMed:[28671664](#)).

**Cellular Location**

Secreted, extracellular space. Secreted

**Tissue Location**

Expressed in the liver by hepatocytes (PubMed:6327681). Also present in other cells such as monocytes, fibroblasts or keratinocytes (PubMed:17320177, PubMed:6444659)

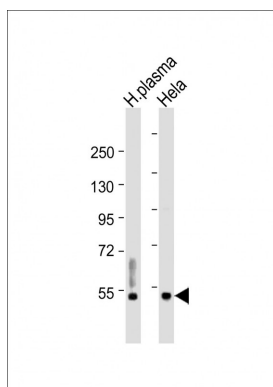
## Background

Responsible for cleaving the alpha-chains of C4b and C3b in the presence of the cofactors C4-binding protein and factor H respectively.

## References

Catterall C.F.,et al.Biochem. J. 242:849-856(1987).  
Goldberger G.,et al.J. Biol. Chem. 262:10065-10071(1987).  
Hillier L.W.,et al.Nature 434:724-731(2005).  
Minta J.O.,et al.Gene 208:17-24(1998).  
Ullman C.G.,et al.FEBS Lett. 371:199-203(1995).

## Images



All lanes : Anti-CFI(light chain) Antibody (C-term) at 1:2000 dilution  
Lane 1: human plasma lysate  
Lane 2: HeLa whole cell lysate  
Lysates/proteins at 20 µg per lane. Secondary Goat Anti-Rabbit IgG, (H+L), Peroxidase conjugated at 1/10000 dilution. Predicted band size : 66 kDa  
Blocking/Dilution buffer: 5% NFDm/TBST.

Please note: All products are 'FOR RESEARCH USE ONLY. NOT FOR USE IN DIAGNOSTIC OR THERAPEUTIC PROCEDURES'.