

# FEV Antibody (N-Term)

Purified Rabbit Polyclonal Antibody (Pab)

Catalog # AP21652a

## Product Information

---

Application	WB, IHC-P, E
Primary Accession	<a href="#">Q99581</a>
Reactivity	Human, Rat, Mouse
Host	Rabbit
Clonality	polyclonal
Isotype	Rabbit IgG
Clone Names	RB53811
Calculated MW	25030

## Additional Information

---

Gene ID	54738
Other Names	Protein FEV, Fifth Ewing variant protein, PC12 ETS domain-containing transcription factor 1, PC12 ETS factor 1, Pet-1, FEV, PET1
Target/Specificity	This FEV antibody is generated from a rabbit immunized with a KLH conjugated synthetic peptide between 17-49 amino acids from human FEV.
Dilution	WB~~1:2000 IHC-P~~1:100~500 E~~Use at an assay dependent concentration.
Format	Purified polyclonal antibody supplied in PBS with 0.09% (W/V) sodium azide. This antibody is purified through a protein A column, followed by peptide affinity purification.
Storage	Maintain refrigerated at 2-8°C for up to 2 weeks. For long term storage store at -20°C in small aliquots to prevent freeze-thaw cycles.
Precautions	FEV Antibody (N-Term) is for research use only and not for use in diagnostic or therapeutic procedures.

## Protein Information

---

Name	FEV
Synonyms	PET1
Function	Functions as a transcriptional regulator. According to PubMed: <a href="#">12761502</a> , it functions as a transcriptional repressor. Functions in the differentiation and the maintenance of the central serotonergic neurons. May play a role in cell growth.

## Cellular Location

Nucleus {ECO:0000255 | PROSITE-ProRule:PRU00237, ECO:0000269 | PubMed:12761502}

## Tissue Location

In brain, exclusively expressed in the major serotonergic neurons of the dorsal and median raphe nuclei located in the midbrain and pons. Also detected in prostate and small intestine

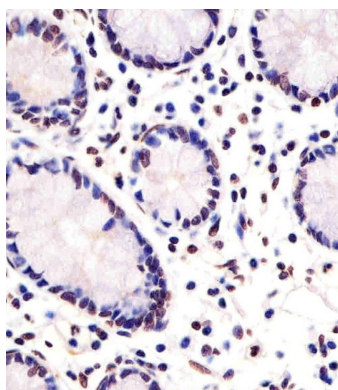
## Background

Functions as a transcriptional regulator. According to PubMed: [12761502](#), it functions as a transcriptional repressor. Functions in the differentiation and the maintenance of the central serotonergic neurons. May play a role in cell growth.

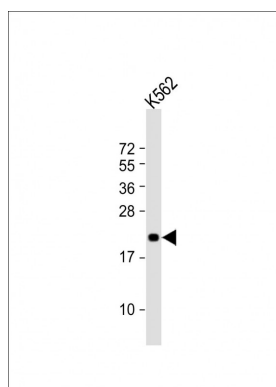
## References

Peter M.,et al.Oncogene 14:1159-1164(1997).  
Hillier L.W.,et al.Nature 434:724-731(2005).  
Mural R.J.,et al.Submitted (JUL-2005) to the EMBL/GenBank/DDBJ databases.  
Maurer P.,et al.Oncogene 22:3319-3329(2003).  
Maurer P.,et al.Neurosci. Lett. 357:215-218(2004).

## Images



AP21652a staining FEV in human small intestine sections by Immunohistochemistry (IHC-P - paraformaldehyde-fixed, paraffin-embedded sections). Tissue was fixed with formaldehyde and blocked with 3% BSA for 0.5 hour at room temperature; antigen retrieval was by heat mediation with a citrate buffer (pH6). Samples were incubated with primary antibody (1/25) for 1 hour at 37°C. A undiluted biotinylated goat polyvalent antibody was used as the secondary antibody.



Anti-FEV Antibody (N-Term) at 1:2000 dilution + K562 whole cell lysate Lysates/proteins at 20 µg per lane. Secondary Goat Anti-Rabbit IgG, (H+L), Peroxidase conjugated at 1/10000 dilution. Predicted band size : 25 kDa Blocking/Dilution buffer: 5% NFDM/TBST.

Please note: All products are 'FOR RESEARCH USE ONLY. NOT FOR USE IN DIAGNOSTIC OR THERAPEUTIC PROCEDURES'.