

# ITGA2B(Integrin alpha-IIb heavy chain) Antibody (C-term)

Purified Rabbit Polyclonal Antibody (Pab)

Catalog # AP21648b

## Product Information

---

<b>Application</b>	WB, E
<b>Primary Accession</b>	<a href="#">P08514</a>
<b>Reactivity</b>	Human
<b>Host</b>	Rabbit
<b>Clonality</b>	polyclonal
<b>Isotype</b>	Rabbit IgG
<b>Clone Names</b>	RB49132
<b>Calculated MW</b>	113377

## Additional Information

---

<b>Gene ID</b>	3674
<b>Other Names</b>	Integrin alpha-IIb, GPalpha IIb, GPIIb, Platelet membrane glycoprotein IIb, CD41, Integrin alpha-IIb heavy chain, Integrin alpha-IIb light chain, form 1, Integrin alpha-IIb light chain, form 2, ITGA2B, GP2B, ITGAB
<b>Target/Specificity</b>	This ITGA2B(Integrin alpha-IIb heavy chain) antibody is generated from a rabbit immunized with a KLH conjugated synthetic peptide between 783-817 amino acids from the C-terminal region of human ITGA2B(Integrin alpha-IIb heavy chain).
<b>Dilution</b>	WB~~1:2000 E~~Use at an assay dependent concentration.
<b>Format</b>	Purified polyclonal antibody supplied in PBS with 0.09% (W/V) sodium azide. This antibody is purified through a protein A column, followed by peptide affinity purification.
<b>Storage</b>	Maintain refrigerated at 2-8°C for up to 2 weeks. For long term storage store at -20°C in small aliquots to prevent freeze-thaw cycles.
<b>Precautions</b>	ITGA2B(Integrin alpha-IIb heavy chain) Antibody (C-term) is for research use only and not for use in diagnostic or therapeutic procedures.

## Protein Information

---

<b>Name</b>	ITGA2B
<b>Synonyms</b>	GP2B, ITGAB
<b>Function</b>	Integrin alpha-IIb/beta-3 is a receptor for fibronectin, fibrinogen,

plasminogen, prothrombin, thrombospondin and vitronectin. It recognizes the sequence R-G-D in a wide array of ligands. It recognizes the sequence H-H-L-G-G-A-K-Q-A-G-D-V in fibrinogen gamma chain (By similarity). Following activation integrin alpha-IIb/beta-3 brings about platelet/platelet interaction through binding of soluble fibrinogen (PubMed:[9111081](#)). This step leads to rapid platelet aggregation which physically plugs ruptured endothelial cell surface (By similarity).

**Cellular Location**

Membrane; Single-pass type I membrane protein.

**Tissue Location**

Isoform 1 and isoform 2 are expressed in platelets and megakaryocytes, but not in reticulocytes. Not detected in Jurkat, nor in U937 cell lines (PubMed:2351656). Isoform 3 is expressed in prostate adenocarcinoma, as well as in several erythroleukemia, prostate adenocarcinoma and melanoma cell lines, including PC-3, DU-145, HEL, WM983A, WM983B and WM35. Not detected in platelets, nor in normal prostate (at protein level) (PubMed:9809974)

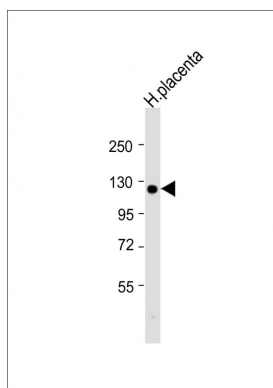
## Background

Integrin alpha-IIb/beta-3 is a receptor for fibronectin, fibrinogen, plasminogen, prothrombin, thrombospondin and vitronectin. It recognizes the sequence R-G-D in a wide array of ligands. It recognizes the sequence H-H-L-G-G-A-K-Q-A-G-D-V in fibrinogen gamma chain. Following activation integrin alpha-IIb/beta-3 brings about platelet/platelet interaction through binding of soluble fibrinogen. This step leads to rapid platelet aggregation which physically plugs ruptured endothelial cell surface.

## References

Poncz M., et al. J. Biol. Chem. 262:8476-8482(1987).  
Frachet P., et al. Mol. Biol. Rep. 14:27-33(1990).  
Heidenreich R., et al. Biochemistry 29:1232-1244(1990).  
Ota T., et al. Nat. Genet. 36:40-45(2004).  
Zody M.C., et al. Nature 440:1045-1049(2006).

## Images



Anti-ITGA2B(Integrin alpha-IIb heavy chain) Antibody (C-term) at 1:2000 dilution + human placenta lysate  
Lysates/proteins at 20 µg per lane. Secondary Goat Anti-Rabbit IgG, (H+L), Peroxidase conjugated at 1/10000 dilution. Predicted band size : 113 kDa Blocking/Dilution buffer: 5% NFDM/TBST.

Please note: All products are 'FOR RESEARCH USE ONLY. NOT FOR USE IN DIAGNOSTIC OR THERAPEUTIC PROCEDURES'.