

SCO1 Antibody (Center)

Purified Rabbit Polyclonal Antibody (Pab)
Catalog # AP21640c

Product Information

Application	WB, E
Primary Accession	O75880
Reactivity	Human, Mouse
Host	Rabbit
Clonality	polyclonal
Isotype	Rabbit IgG
Clone Names	RB48404
Calculated MW	33814

Additional Information

Gene ID	6341
Other Names	Protein SCO1 homolog, mitochondrial, SCO1, SCOD1
Target/Specificity	This SCO1 antibody is generated from a rabbit immunized with a KLH conjugated synthetic peptide between 125-158 amino acids from the Central region of human SCO1.
Dilution	WB~~1:2000 E~~Use at an assay dependent concentration.
Format	Purified polyclonal antibody supplied in PBS with 0.09% (W/V) sodium azide. This antibody is purified through a protein A column, followed by peptide affinity purification.
Storage	Maintain refrigerated at 2-8°C for up to 2 weeks. For long term storage store at -20°C in small aliquots to prevent freeze-thaw cycles.
Precautions	SCO1 Antibody (Center) is for research use only and not for use in diagnostic or therapeutic procedures.

Protein Information

Name	SCO1
Synonyms	SCOD1
Function	Copper metallochaperone essential for the maturation of cytochrome c oxidase subunit II (MT-CO2/COX2). Together with SCO2, involved in delivering copper to the Cu(A) site on MT-CO2/COX2 (PubMed: 15229189 , PubMed: 15659396 , PubMed: 16735468 , PubMed: 17189203 ,

PubMed:[19336478](#)). Plays an important role in the regulation of copper homeostasis by controlling the abundance and cell membrane localization of copper transporter CTR1 (By similarity).

Cellular Location

Mitochondrion inner membrane; Single-pass membrane protein

Tissue Location

Predominantly expressed in tissues characterized by high rates of oxidative phosphorylation (OxPhos), including muscle, heart, and brain.

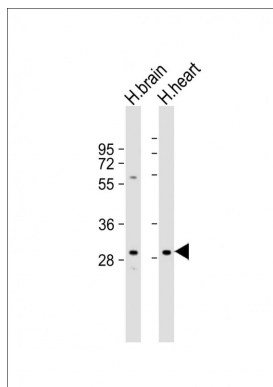
Background

Thought to play a role in cellular copper homeostasis, mitochondrial redox signaling or insertion of copper into the active site of COX.

References

Petruzzella V.,et al.Genomics 54:494-504(1998).
Horvath R.,et al.Biochem. Biophys. Res. Commun. 276:530-533(2000).
Peng Y.,et al.Submitted (SEP-1999) to the EMBL/GenBank/DDBJ databases.
Ota T.,et al.Nat. Genet. 36:40-45(2004).
Mural R.J.,et al.Submitted (SEP-2005) to the EMBL/GenBank/DDBJ databases.

Images



All lanes : Anti-SCO1 Antibody (Center) at 1:2000 dilution
Lane 1: human brain lysate Lane 2: human heart lysate
Lysates/proteins at 20 µg per lane. Secondary Goat Anti-Rabbit IgG, (H+L), Peroxidase conjugated at 1/10000 dilution. Predicted band size : 34 kDa Blocking/Dilution buffer: 5% NFDM/TBST.

Please note: All products are 'FOR RESEARCH USE ONLY. NOT FOR USE IN DIAGNOSTIC OR THERAPEUTIC PROCEDURES'.