

SEMA4B Antibody (C-term)

Purified Rabbit Polyclonal Antibody (Pab)

Catalog # AP21616b

Product Information

Application	WB, E
Primary Accession	Q9NPR2
Reactivity	Human, Rat, Mouse
Host	Rabbit
Clonality	polyclonal
Isotype	Rabbit IgG
Clone Names	RB53242
Calculated MW	92766

Additional Information

Gene ID	10509
Other Names	Semaphorin-4B, SEMA4B, KIAA1745, SEMAC
Target/Specificity	This SEMA4B antibody is generated from a rabbit immunized with a KLH conjugated synthetic peptide between 371-405 amino acids from the C-terminal region of human SEMA4B.
Dilution	WB~~1:2000 E~~Use at an assay dependent concentration.
Format	Purified polyclonal antibody supplied in PBS with 0.09% (W/V) sodium azide. This antibody is purified through a protein A column, followed by peptide affinity purification.
Storage	Maintain refrigerated at 2-8°C for up to 2 weeks. For long term storage store at -20°C in small aliquots to prevent freeze-thaw cycles.
Precautions	SEMA4B Antibody (C-term) is for research use only and not for use in diagnostic or therapeutic procedures.

Protein Information

Name	SEMA4B (HGNC:10730)
Function	Inhibits axonal extension by providing local signals to specify territories inaccessible for growing axons.
Cellular Location	Membrane; Single-pass type I membrane protein.

Background

Inhibits axonal extension by providing local signals to specify territories inaccessible for growing axons.

References

White J.R.,et al.Submitted (OCT-2003) to the EMBL/GenBank/DDBJ databases.

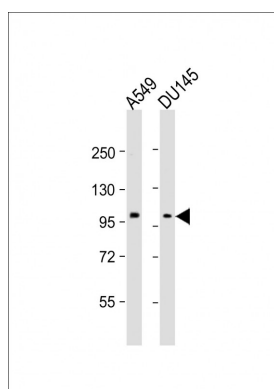
Nagase T.,et al.DNA Res. 7:347-355(2000).

Clark H.F.,et al.Genome Res. 13:2265-2270(2003).

Zody M.C.,et al.Nature 440:671-675(2006).

Zhang Z.,et al.Protein Sci. 13:2819-2824(2004).

Images



All lanes : Anti-SEMA4B Antibody (C-term) at 1:2000 dilution Lane 1: A549 whole cell lysates Lane 2: DU145 whole cell lysates Lysates/proteins at 20 µg per lane. Secondary Goat Anti-Rabbit IgG, (H+L), Peroxidase conjugated at 1/10000 dilution. Predicted band size : 92 kDa Blocking/Dilution buffer: 5% NFDM/TBST.

Please note: All products are 'FOR RESEARCH USE ONLY. NOT FOR USE IN DIAGNOSTIC OR THERAPEUTIC PROCEDURES'.