

# CMA1 Antibody (N-Term)

Purified Rabbit Polyclonal Antibody (Pab)

Catalog # AP21604a

## Product Information

---

<b>Application</b>	WB, E
<b>Primary Accession</b>	<a href="#">P23946</a>
<b>Reactivity</b>	Human, Rat, Mouse
<b>Host</b>	Rabbit
<b>Clonality</b>	polyclonal
<b>Isotype</b>	Rabbit IgG
<b>Clone Names</b>	RB53046
<b>Calculated MW</b>	27325

## Additional Information

---

<b>Gene ID</b>	1215
<b>Other Names</b>	Chymase, Alpha-chymase, Mast cell protease I, CMA1, CYH, CYM
<b>Target/Specificity</b>	This CMA1 antibody is generated from a rabbit immunized with a KLH conjugated synthetic peptide between 84-118 amino acids from human CMA1.
<b>Dilution</b>	WB~~1:2000 E~~Use at an assay dependent concentration.
<b>Format</b>	Purified polyclonal antibody supplied in PBS with 0.09% (W/V) sodium azide. This antibody is purified through a protein A column, followed by peptide affinity purification.
<b>Storage</b>	Maintain refrigerated at 2-8°C for up to 2 weeks. For long term storage store at -20°C in small aliquots to prevent freeze-thaw cycles.
<b>Precautions</b>	CMA1 Antibody (N-Term) is for research use only and not for use in diagnostic or therapeutic procedures.

## Protein Information

---

<b>Name</b>	CMA1
<b>Synonyms</b>	CYH, CYM
<b>Function</b>	Major secreted protease of mast cells with suspected roles in vasoactive peptide generation, extracellular matrix degradation, and regulation of gland secretion.

<b>Cellular Location</b>	Secreted. Cytoplasmic granule. Note=Mast cell granules
<b>Tissue Location</b>	Mast cells in lung, heart, skin and placenta. Expressed in both normal skin and in urticaria pigmentosa lesions

## Background

---

Major secreted protease of mast cells with suspected roles in vasoactive peptide generation, extracellular matrix degradation, and regulation of gland secretion.

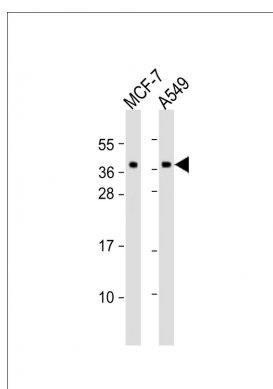
## References

---

Caughey G.H.,et al.J. Biol. Chem. 266:12956-12963(1991).  
 Urata H.,et al.J. Biol. Chem. 266:17173-17179(1991).  
 Schechter N.M.,et al.J. Immunol. 152:4062-4069(1994).  
 Goshima N.,et al.Nat. Methods 5:1011-1017(2008).  
 Heilig R.,et al.Nature 421:601-607(2003).

## Images

---



All lanes : Anti-CMA1 Antibody (N-Term) at 1:2000 dilution  
 Lane 1: MCF-7 whole cell lysates Lane 2: A549 whole cell lysates  
 Lysates/proteins at 20 µg per lane. Secondary Goat Anti-Rabbit IgG, (H+L), Peroxidase conjugated at 1/10000 dilution. Predicted band size : 27 kDa  
 Blocking/Dilution buffer: 5% NFDM/TBST.

Please note: All products are 'FOR RESEARCH USE ONLY. NOT FOR USE IN DIAGNOSTIC OR THERAPEUTIC PROCEDURES'.