

# CSK Antibody (N-term)

Purified Rabbit Polyclonal Antibody (Pab)

Catalog # AP21597a

## Product Information

---

<b>Application</b>	WB, E
<b>Primary Accession</b>	<a href="#">P41240</a>
<b>Reactivity</b>	Human, Rat, Mouse
<b>Host</b>	Rabbit
<b>Clonality</b>	polyclonal
<b>Isotype</b>	Rabbit IgG
<b>Clone Names</b>	RB50498
<b>Calculated MW</b>	50704

## Additional Information

---

<b>Gene ID</b>	1445
<b>Other Names</b>	Tyrosine-protein kinase CSK, C-Src kinase, Protein-tyrosine kinase CYL, CSK
<b>Target/Specificity</b>	This CSK antibody is generated from a rabbit immunized with a KLH conjugated synthetic peptide between 17-51 amino acids from the N-terminal region of human CSK.
<b>Dilution</b>	WB~~1:2000 E~~Use at an assay dependent concentration.
<b>Format</b>	Purified polyclonal antibody supplied in PBS with 0.09% (W/V) sodium azide. This antibody is purified through a protein A column, followed by peptide affinity purification.
<b>Storage</b>	Maintain refrigerated at 2-8°C for up to 2 weeks. For long term storage store at -20°C in small aliquots to prevent freeze-thaw cycles.
<b>Precautions</b>	CSK Antibody (N-term) is for research use only and not for use in diagnostic or therapeutic procedures.

## Protein Information

---

<b>Name</b>	CSK
<b>Function</b>	Non-receptor tyrosine-protein kinase that plays an important role in the regulation of cell growth, differentiation, migration and immune response. Phosphorylates tyrosine residues located in the C- terminal tails of Src-family kinases (SFKs) including LCK, SRC, HCK, FYN, LYN, CSK or YES1. Upon tail phosphorylation, Src-family members engage in intramolecular interactions between the phosphotyrosine tail and the SH2 domain that result in an

inactive conformation. To inhibit SFKs, CSK is recruited to the plasma membrane via binding to transmembrane proteins or adapter proteins located near the plasma membrane. Suppresses signaling by various surface receptors, including T-cell receptor (TCR) and B-cell receptor (BCR) by phosphorylating and maintaining inactive several positive effectors such as FYN or LCK. May act as a negative regulator of EGFR and STAT3 signaling pathways (PubMed:[26918609](#)).

#### Cellular Location

Cytoplasm {ECO:0000250|UniProtKB:P41241}. Cell membrane {ECO:0000250|UniProtKB:P41241}. Note=Mainly cytoplasmic, also present in lipid rafts. {ECO:0000250|UniProtKB:P41241}

#### Tissue Location

Expressed in lung and macrophages.

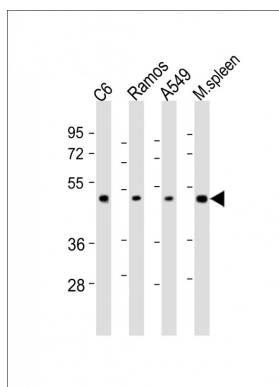
## Background

Non-receptor tyrosine-protein kinase that plays an important role in the regulation of cell growth, differentiation, migration and immune response. Phosphorylates tyrosine residues located in the C-terminal tails of Src-family kinases (SFKs) including LCK, SRC, HCK, FYN, LYN or YES1. Upon tail phosphorylation, Src-family members engage in intramolecular interactions between the phosphotyrosine tail and the SH2 domain that result in an inactive conformation. To inhibit SFKs, CSK is recruited to the plasma membrane via binding to transmembrane proteins or adapter proteins located near the plasma membrane. Suppresses signaling by various surface receptors, including T- cell receptor (TCR) and B-cell receptor (BCR) by phosphorylating and maintaining inactive several positive effectors such as FYN or LCK.

## References

Partanen J.,et al.Oncogene 6:2013-2018(1991).  
Braeuninger A.,et al.Proc. Natl. Acad. Sci. U.S.A. 88:10411-10415(1991).  
Brauninger A.,et al.Gene 110:205-211(1992).  
Braeuninger A.,et al.Oncogene 8:1365-1369(1993).  
Halleck A.,et al.Submitted (JUN-2004) to the EMBL/GenBank/DBJ databases.

## Images



All lanes : Anti-CSK Antibody (N-term) at 1:2000 dilution  
Lane 1: C6 whole cell lysates Lane 2: Ramos whole cell lysates Lane 3: A549 whole cell lysates Lane 4: mouse spleen lysates Lysates/proteins at 20 µg per lane.  
Secondary Goat Anti-Rabbit IgG, (H+L), Peroxidase conjugated at 1/10000 dilution. Predicted band size : 51 kDa Blocking/Dilution buffer: 5% NFDM/TBST.

Please note: All products are 'FOR RESEARCH USE ONLY. NOT FOR USE IN DIAGNOSTIC OR THERAPEUTIC PROCEDURES'.