

Zebrafish stil Antibody (C-term)

Purified Rabbit Polyclonal Antibody (Pab)

Catalog # AP21594b

Product Information

Application	WB, E
Primary Accession	Q8JGS1
Reactivity	Zebrafish
Host	Rabbit
Clonality	polyclonal
Isotype	Rabbit IgG
Clone Names	RB53223
Calculated MW	138246

Additional Information

Gene ID	192317
Other Names	SCL-interrupting locus protein homolog, stil, sill
Target/Specificity	This Zebrafish stil antibody is generated from a rabbit immunized with a KLH conjugated synthetic peptide between 866-900 amino acids from the C-terminal region of Zebrafish stil.
Dilution	WB~~1:2000 E~~Use at an assay dependent concentration.
Format	Purified polyclonal antibody supplied in PBS with 0.09% (W/V) sodium azide. This antibody is purified through a protein A column, followed by peptide affinity purification.
Storage	Maintain refrigerated at 2-8°C for up to 2 weeks. For long term storage store at -20°C in small aliquots to prevent freeze-thaw cycles.
Precautions	Zebrafish stil Antibody (C-term) is for research use only and not for use in diagnostic or therapeutic procedures.

Protein Information

Name	stil
Synonyms	sill
Function	Plays an essential role in early embryonic development (PubMed: 12006978). Plays an important role in the regulation of centriole duplication and directional cell motility (By similarity).

Cellular Location

Cytoplasm, cytosol {ECO:0000250|UniProtKB:Q60988}. Cytoplasm, cytoskeleton, microtubule organizing center, centrosome, centriole {ECO:0000250|UniProtKB:Q15468}. Cytoplasm, cell cortex {ECO:0000250|UniProtKB:Q15468}

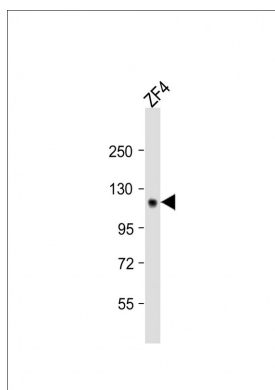
Background

Plays an essential role in early embryonic development.

References

Golling G.,et al.Nat. Genet. 31:135-140(2002).
Howe K.,et al.Nature 496:498-503(2013).

Images



Anti-Zebrafish stil Antibody (C-term)at 1:2000 dilution + ZF4 whole cell lysates Lysates/proteins at 20 µg per lane. Secondary Goat Anti-Rabbit IgG, (H+L), Peroxidase conjugated at 1/10000 dilution. Predicted band size : 138 kDa Blocking/Dilution buffer: 5% NFDM/TBST.

Please note: All products are 'FOR RESEARCH USE ONLY. NOT FOR USE IN DIAGNOSTIC OR THERAPEUTIC PROCEDURES'.