

GFRA1 Antibody (C-term)

Purified Rabbit Polyclonal Antibody (Pab)

Catalog # AP21582b

Product Information

Application	WB, E
Primary Accession	P56159
Reactivity	Human, Rat, Mouse
Host	Rabbit
Clonality	polyclonal
Isotype	Rabbit IgG
Clone Names	RB50601
Calculated MW	51456

Additional Information

Gene ID	2674
Other Names	GNDF family receptor alpha-1, GDNF receptor alpha-1, GDNFR-alpha-1, GFR-alpha-1, RET ligand 1, TGF-beta-related neurotrophic factor receptor 1, GFRA1, GDNFRA, RETL1, TRNR1
Target/Specificity	This GFRA1 antibody is generated from a rabbit immunized with a KLH conjugated synthetic peptide between 381-415 amino acids from the C-terminal region of human GFRA1.
Dilution	WB~~1:1000 E~~Use at an assay dependent concentration.
Format	Purified polyclonal antibody supplied in PBS with 0.09% (W/V) sodium azide. This antibody is purified through a protein A column, followed by peptide affinity purification.
Storage	Maintain refrigerated at 2-8°C for up to 2 weeks. For long term storage store at -20°C in small aliquots to prevent freeze-thaw cycles.
Precautions	GFRA1 Antibody (C-term) is for research use only and not for use in diagnostic or therapeutic procedures.

Protein Information

Name	GFRA1
Synonyms	GDNFRA, RETL1, TRNR1
Function	Coreceptor for GDNF, a neurotrophic factor that enhances survival and morphological differentiation of dopaminergic neurons and increases their

high-affinity dopamine uptake (PubMed:[10829012](#), PubMed:[31535977](#)). GDNF-binding leads to autophosphorylation and activation of the RET receptor (PubMed:[31535977](#)).

Cellular Location

Cell membrane {ECO:0000250|UniProtKB:Q62997}; Lipid-anchor, GPI-anchor {ECO:0000250|UniProtKB:Q62997}. Golgi apparatus, trans-Golgi network {ECO:0000250|UniProtKB:Q62997}. Endosome {ECO:0000250|UniProtKB:Q62997}. Endosome, multivesicular body {ECO:0000250|UniProtKB:Q62997}. Note=Localizes mainly to the plasma membrane. In the presence of SORL1, shifts to vesicular structures, including trans-Golgi network, endosomes and multivesicular bodies {ECO:0000250|UniProtKB:Q62997}

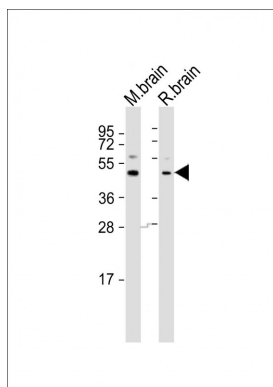
Background

Receptor for GDNF. Mediates the GDNF-induced autophosphorylation and activation of the RET receptor (By similarity).

References

Jing S.,et al.Cell 85:1113-1124(1996).
Sanicola M.,et al.Proc. Natl. Acad. Sci. U.S.A. 94:6238-6243(1997).
Angrist M.,et al.Genomics 48:354-362(1998).
Shefelbine S.E.,et al.Hum. Genet. 102:474-478(1998).
Hishiki T.,et al.Submitted (OCT-1997) to the EMBL/GenBank/DBJ databases.

Images



All lanes : Anti-GFRA1 Antibody (C-term) at 1:1000 dilution
Lane 1: mouse brain lysates Lane 2: rat brain lysates
Lysates/proteins at 20 µg per lane. Secondary Goat Anti-Rabbit IgG, (H+L), Peroxidase conjugated at 1/10000 dilution. Predicted band size : 51 kDa Blocking/Dilution buffer: 5% NFDM/TBST.

Please note: All products are 'FOR RESEARCH USE ONLY. NOT FOR USE IN DIAGNOSTIC OR THERAPEUTIC PROCEDURES'.