

PPP1R1B Antibody (Center)

Purified Rabbit Polyclonal Antibody (Pab)

Catalog # AP21496c

Product Information

Application	WB, E
Primary Accession	Q9UD71
Reactivity	Human, Mouse
Host	Rabbit
Clonality	polyclonal
Isotype	Rabbit IgG
Clone Names	RB53838
Calculated MW	22963

Additional Information

Gene ID	84152
Other Names	Protein phosphatase 1 regulatory subunit 1B, DARPP-32, Dopamine- and cAMP-regulated neuronal phosphoprotein, PPP1R1B, DARPP32
Target/Specificity	This PPP1R1B antibody is generated from a rabbit immunized with a KLH conjugated synthetic peptide between 106-139 amino acids from the Central region of human PPP1R1B.
Dilution	WB~~1:2000 E~~Use at an assay dependent concentration.
Format	Purified polyclonal antibody supplied in PBS with 0.09% (W/V) sodium azide. This antibody is purified through a protein A column, followed by peptide affinity purification.
Storage	Maintain refrigerated at 2-8°C for up to 2 weeks. For long term storage store at -20°C in small aliquots to prevent freeze-thaw cycles.
Precautions	PPP1R1B Antibody (Center) is for research use only and not for use in diagnostic or therapeutic procedures.

Protein Information

Name	PPP1R1B
Synonyms	DARPP32
Function	Inhibitor of protein-phosphatase 1.
Cellular Location	Cytoplasm.

Background

Inhibitor of protein-phosphatase 1.

References

Brene S.,et al.J. Neurosci. 14:985-998(1994).

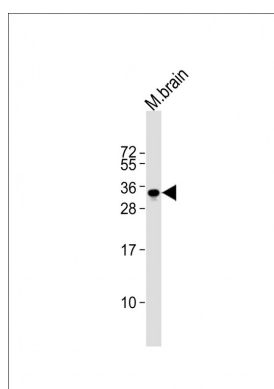
El-Rifai W.,et al.Cancer Res. 62:4061-4064(2002).

Liu Q.-R.,et al.Submitted (OCT-2001) to the EMBL/GenBank/DDBJ databases.

Ota T.,et al.Nat. Genet. 36:40-45(2004).

Kalnina N.,et al.Submitted (MAY-2003) to the EMBL/GenBank/DDBJ databases.

Images



Anti-PPP1R1B Antibody (Center)at 1:2000 dilution + mouse brain lysates Lysates/proteins at 20 µg per lane. Secondary Goat Anti-Rabbit IgG, (H+L), Peroxidase conjugated at 1/10000 dilution Predicted band size : 23 kDa Blocking/Dilution buffer: 5% NFDM/TBST.

Please note: All products are 'FOR RESEARCH USE ONLY. NOT FOR USE IN DIAGNOSTIC OR THERAPEUTIC PROCEDURES'.