

KIF22 Antibody (Center)

Purified Rabbit Polyclonal Antibody (Pab)

Catalog # AP21490c

Product Information

Application	WB, E
Primary Accession	Q14807
Reactivity	Human
Host	Rabbit
Clonality	polyclonal
Isotype	Rabbit IgG
Clone Names	RB53835
Calculated MW	73262

Additional Information

Gene ID	3835
Other Names	Kinesin-like protein KIF22, Kinesin-like DNA-binding protein, Kinesin-like protein 4, KIF22, KID, KNSL4
Target/Specificity	This KIF22 antibody is generated from a rabbit immunized with a KLH conjugated synthetic peptide between 397-427 amino acids from the Central region of human KIF22.
Dilution	WB~~1:1000 E~~Use at an assay dependent concentration.
Format	Purified polyclonal antibody supplied in PBS with 0.09% (W/V) sodium azide. This antibody is purified through a protein A column, followed by peptide affinity purification.
Storage	Maintain refrigerated at 2-8°C for up to 2 weeks. For long term storage store at -20°C in small aliquots to prevent freeze-thaw cycles.
Precautions	KIF22 Antibody (Center) is for research use only and not for use in diagnostic or therapeutic procedures.

Protein Information

Name	KIF22
Synonyms	KID, KNSL4
Function	Kinesin family member that is involved in spindle formation and the movements of chromosomes during mitosis and meiosis. Binds to microtubules and to DNA (By similarity). Plays a role in congression of

laterally attached chromosomes in NDC80-depleted cells (PubMed:[25743205](#)).

Cellular Location

Nucleus. Cytoplasm, cytoskeleton

Tissue Location

Expressed in bone, cartilage, joint capsule, ligament, skin, and primary cultured chondrocytes

Background

Kinesin family that is involved in spindle formation and the movements of chromosomes during mitosis and meiosis. Binds to microtubules and to DNA.

References

Tokai N.,et al.EMBO J. 15:457-467(1996).

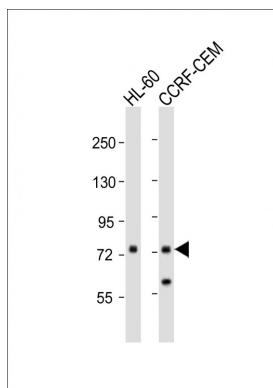
Song J.,et al.Genomics 52:374-377(1998).

Ota T.,et al.Nat. Genet. 36:40-45(2004).

Kalnine N.,et al.Submitted (MAY-2003) to the EMBL/GenBank/DDBJ databases.

Totoki Y.,et al.Submitted (APR-2005) to the EMBL/GenBank/DDBJ databases.

Images



All lanes : Anti-KIF22 Antibody (Center) at 1:1000 dilution
Lane 1: HL-60 whole cell lysates Lane 2: CCRF-CEM whole cell lysates Lysates/proteins at 20 µg per lane. Secondary Goat Anti-Rabbit IgG, (H+L), Peroxidase conjugated at 1/10000 dilution Predicted band size : 73 kDa
Blocking/Dilution buffer: 5% NFDM/TBST.

Please note: All products are 'FOR RESEARCH USE ONLY. NOT FOR USE IN DIAGNOSTIC OR THERAPEUTIC PROCEDURES'.