

FKBP1A Antibody (Center)

Purified Rabbit Polyclonal Antibody (Pab)

Catalog # AP21438c

Product Information

Application	WB, E
Primary Accession	P62942
Reactivity	Human, Rat, Mouse
Host	Rabbit
Clonality	polyclonal
Isotype	Rabbit IgG
Clone Names	RB49821
Calculated MW	11951

Additional Information

Gene ID	2280
Other Names	Peptidyl-prolyl cis-trans isomerase FKBP1A, PPIase FKBP1A, 12 kDa FK506-binding protein, 12 kDa FKBP, FKBP-12, Calstabin-1, FK506-binding protein 1A, FKBP-1A, Immunophilin FKBP12, Rotamase, FKBP1A, FKBP1, FKBP12
Target/Specificity	This FKBP1A antibody is generated from a rabbit immunized with a KLH conjugated synthetic peptide between 34-68 amino acids from the Central region of human FKBP1A.
Dilution	WB~~1:2000 E~~Use at an assay dependent concentration.
Format	Purified polyclonal antibody supplied in PBS with 0.05% (V/V) Proclin 300. This antibody is purified through a protein A column, followed by peptide affinity purification.
Storage	Maintain refrigerated at 2-8°C for up to 2 weeks. For long term storage store at -20°C in small aliquots to prevent freeze-thaw cycles.
Precautions	FKBP1A Antibody (Center) is for research use only and not for use in diagnostic or therapeutic procedures.

Protein Information

Name	FKBP1A
Synonyms	FKBP1, FKBP12
Function	Keeps in an inactive conformation TGFBR1, the TGF-beta type I

serine/threonine kinase receptor, preventing TGF-beta receptor activation in absence of ligand. Recruits SMAD7 to ACVR1B which prevents the association of SMAD2 and SMAD3 with the activin receptor complex, thereby blocking the activin signal. May modulate the RYR1 calcium channel activity. PPIases accelerate the folding of proteins. It catalyzes the cis-trans isomerization of proline imidic peptide bonds in oligopeptides.

Cellular Location

Cytoplasm, cytosol. Sarcoplasmic reticulum membrane {ECO:0000250|UniProtKB:P62943}; Peripheral membrane protein {ECO:0000250|UniProtKB:P62943}; Cytoplasmic side {ECO:0000250|UniProtKB:P62943}

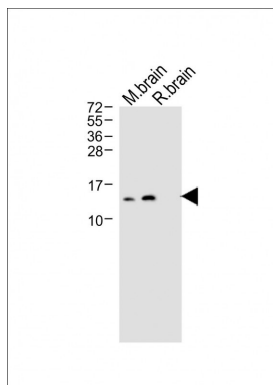
Background

Keeps in an inactive conformation TGFBR1, the TGF-beta type I serine/threonine kinase receptor, preventing TGF-beta receptor activation in absence of ligand. Recruits SMAD7 to ACVR1B which prevents the association of SMAD2 and SMAD3 with the activin receptor complex, thereby blocking the activin signal. May modulate the RYR1 calcium channel activity. PPIases accelerate the folding of proteins. It catalyzes the cis-trans isomerization of proline imidic peptide bonds in oligopeptides.

References

Maki N.,et al.Proc. Natl. Acad. Sci. U.S.A. 87:5440-5443(1990).
Standaert R.F.,et al.Nature 346:671-674(1990).
Dilella A.G.,et al.Biochemistry 30:8512-8517(1991).
Peattie D.A.,et al.Gene 150:251-257(1994).
Kalnine N.,et al.Submitted (MAY-2003) to the EMBL/GenBank/DDBJ databases.

Images



All lanes : Anti-FKBP1A Antibody (Center) at 1:1000 dilution
Lane 1: M. brain whole cell lysate
Lane 2: R. brain whole cell lysate
Lysates/proteins at 20 µg per lane.
Secondary Goat Anti-Rabbit IgG, (H+L), Peroxidase conjugated at 1/10000 dilution.
Observed band size : 13kDa
Blocking/Dilution buffer: 5% NFDM/TBST.

Please note: All products are 'FOR RESEARCH USE ONLY. NOT FOR USE IN DIAGNOSTIC OR THERAPEUTIC PROCEDURES'.