

# MC3R Antibody (C-term)

Purified Rabbit Polyclonal Antibody (Pab)

Catalog # AP21431b

## Product Information

---

<b>Application</b>	WB, E
<b>Primary Accession</b>	<a href="#">P41968</a>
<b>Reactivity</b>	Human, Rat, Mouse
<b>Host</b>	Rabbit
<b>Clonality</b>	polyclonal
<b>Isotype</b>	Rabbit IgG
<b>Clone Names</b>	RB48193
<b>Calculated MW</b>	36043

## Additional Information

---

<b>Gene ID</b>	4159
<b>Other Names</b>	Melanocortin receptor 3, MC3-R, MC3R
<b>Target/Specificity</b>	This MC3R antibody is generated from a rabbit immunized with a KLH conjugated synthetic peptide between 301-335 amino acids from the C-terminal region of human MC3R.
<b>Dilution</b>	WB~~1:2000 E~~Use at an assay dependent concentration.
<b>Format</b>	Purified polyclonal antibody supplied in PBS with 0.09% (W/V) sodium azide. This antibody is purified through a protein A column, followed by peptide affinity purification.
<b>Storage</b>	Maintain refrigerated at 2-8°C for up to 2 weeks. For long term storage store at -20°C in small aliquots to prevent freeze-thaw cycles.
<b>Precautions</b>	MC3R Antibody (C-term) is for research use only and not for use in diagnostic or therapeutic procedures.

## Protein Information

---

<b>Name</b>	MC3R ( <a href="#">HGNC:6931</a> )
<b>Function</b>	G protein-coupled receptor for melanocyte-stimulating hormones (alpha, beta, and gamma-MSH) and corticotropin/ACTH, which are peptide products of the POMC precursor (PubMed: <a href="#">37524700</a> , PubMed: <a href="#">8463333</a> ). Upon activation, couples to G(s) protein, stimulating adenylate cyclase and the cAMP-dependent signaling pathway, which contributes to the regulation of energy homeostasis (PubMed: <a href="#">18231126</a> , PubMed: <a href="#">37524700</a> ,

PubMed:[8463333](#)). Required for expression of anticipatory patterns of activity and wakefulness during periods of limited nutrient availability and for the normal regulation of circadian clock activity in the brain (By similarity). Binding of the Agouti-related protein/AGPR antagonist precludes alpha-MSH-induced signaling, blocking cAMP production (PubMed:[9311920](#)).

**Cellular Location** Cell membrane; Multi-pass membrane protein.

**Tissue Location** Brain, placental, and gut tissues.

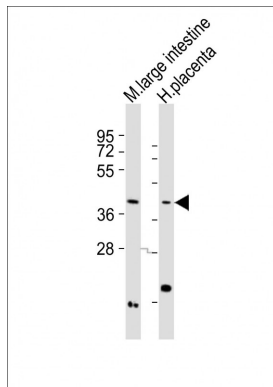
## Background

Receptor for MSH (alpha, beta and gamma) and ACTH. This receptor is mediated by G proteins which activate adenylate cyclase. Required for expression of anticipatory patterns of activity and wakefulness during periods of limited nutrient availability and for the normal regulation of circadian clock activity in the brain.

## References

Gantz I., et al. J. Biol. Chem. 268:8246-8250(1993).  
Kopatz S.A., et al. Submitted (JAN-2003) to the EMBL/GenBank/DDBJ databases.  
Deloukas P., et al. Nature 414:865-871(2001).  
Tarnow P., et al. Obes. Facts 5:45-51(2012).  
Lee Y.-S., et al. J. Clin. Endocrinol. Metab. 87:1423-1426(2002).

## Images



All lanes : Anti-MC3R Antibody (C-term) at 1:2000 dilution  
Lane 1: mouse large intestine lysates Lane 2: human placenta lysates  
Lysates/proteins at 20 µg per lane.  
Secondary Goat Anti-Rabbit IgG, (H+L), Peroxidase conjugated at 1/10000 dilution  
Predicted band size : 36 kDa  
Blocking/Dilution buffer: 5% NFDM/TBST.

Please note: All products are 'FOR RESEARCH USE ONLY. NOT FOR USE IN DIAGNOSTIC OR THERAPEUTIC PROCEDURES'.