

RAPGEF1 Antibody (Center)

Purified Rabbit Polyclonal Antibody (Pab)

Catalog # AP21422c

Product Information

Application	WB, E
Primary Accession	Q13905
Reactivity	Human
Host	Rabbit
Clonality	polyclonal
Isotype	Rabbit IgG
Clone Names	RB52924

Additional Information

Other Names	Rap guanine nucleotide exchange factor 1, CRK SH3-binding GNRP, Guanine nucleotide-releasing factor 2, Protein C3G, RAPGEF1, GRF2
Target/Specificity	This RAPGEF1 antibody is generated from a rabbit immunized with a KLH conjugated synthetic peptide between 536-569 amino acids from the Central region of human RAPGEF1.
Dilution	WB~~1:1000-1:2000 E~~Use at an assay dependent concentration.
Format	Purified polyclonal antibody supplied in PBS with 0.09% (W/V) sodium azide. This antibody is purified through a protein A column, followed by peptide affinity purification.
Storage	Maintain refrigerated at 2-8°C for up to 2 weeks. For long term storage store at -20°C in small aliquots to prevent freeze-thaw cycles.
Precautions	RAPGEF1 Antibody (Center) is for research use only and not for use in diagnostic or therapeutic procedures.

Protein Information

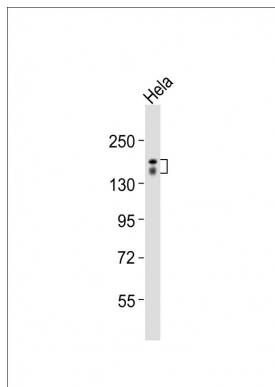
Background

Guanine nucleotide-releasing protein that binds to SH3 domain of CRK and GRB2/ASH. Transduces signals from CRK to activate RAS. Plays a role in the establishment of basal endothelial barrier function. Plays a role in nerve growth factor (NGF)-induced sustained activation of Rap1 and neurite outgrowth.

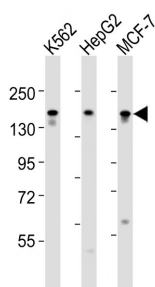
References

Tanaka S., et al. Proc. Natl. Acad. Sci. U.S.A. 91:3443-3447(1994).
Knudsen B., et al. J. Biol. Chem. 269:32781-32787(1994).
Bechtel S., et al. BMC Genomics 8:399-399(2007).
Humphray S.J., et al. Nature 429:369-374(2004).
Matsuda M., et al. J. Biol. Chem. 271:14468-14472(1996).

Images



Anti-RAPGEF1 Antibody (Center) at 1:2000 dilution + HeLa whole cell lysates Lysates/proteins at 20 µg per lane. Secondary Goat Anti-Rabbit IgG, (H+L), Peroxidase conjugated at 1/10000 dilution Predicted band size : 121 kDa Blocking/Dilution buffer: 5% NFDN/TBST.



All lanes : Anti-RAPGEF1 Antibody (Center) at 1:1000-1:2000 dilution Lane 1: K562 whole cell lysates Lane 2: HepG2 whole cell lysates Lane 3: MCF-7 whole cell lysates Lysates/proteins at 20 µg per lane. Secondary Goat Anti-Rabbit IgG, (H+L), Peroxidase conjugated at 1/10000 dilution Predicted band size : 121 kDa Blocking/Dilution buffer: 5% NFDN/TBST.

Please note: All products are 'FOR RESEARCH USE ONLY. NOT FOR USE IN DIAGNOSTIC OR THERAPEUTIC PROCEDURES'.