

# PBRM1 Antibody (C-term)

Purified Rabbit Polyclonal Antibody (Pab)

Catalog # AP21362b

## Product Information

---

<b>Application</b>	WB, E
<b>Primary Accession</b>	<a href="#">Q86U86</a>
<b>Reactivity</b>	Human, Mouse
<b>Host</b>	Rabbit
<b>Clonality</b>	polyclonal
<b>Isotype</b>	Rabbit IgG
<b>Clone Names</b>	RB51306
<b>Calculated MW</b>	192948

## Additional Information

---

<b>Gene ID</b>	55193
<b>Other Names</b>	Protein polybromo-1, hPB1, BRG1-associated factor 180, BAF180, Polybromo-1D, PBRM1, BAF180, PB1
<b>Target/Specificity</b>	This PBRM1 antibody is generated from a rabbit immunized with a KLH conjugated synthetic peptide between 1121-1155 amino acids from the C-terminal region of human PBRM1.
<b>Dilution</b>	WB~~1:2000 E~~Use at an assay dependent concentration.
<b>Format</b>	Purified polyclonal antibody supplied in PBS with 0.09% (W/V) sodium azide. This antibody is purified through a protein A column, followed by peptide affinity purification.
<b>Storage</b>	Maintain refrigerated at 2-8°C for up to 2 weeks. For long term storage store at -20°C in small aliquots to prevent freeze-thaw cycles.
<b>Precautions</b>	PBRM1 Antibody (C-term) is for research use only and not for use in diagnostic or therapeutic procedures.

## Protein Information

---

<b>Name</b>	PBRM1
<b>Synonyms</b>	BAF180, PB1
<b>Function</b>	Involved in transcriptional activation and repression of select genes by chromatin remodeling (alteration of DNA-nucleosome topology). Required for the stability of the SWI/SNF chromatin remodeling complex SWI/SNF-B (PBAF).

Acts as a negative regulator of cell proliferation.

**Cellular Location** Nucleus

**Tissue Location** Widely expressed..

## Background

---

Involved in transcriptional activation and repression of select genes by chromatin remodeling (alteration of DNA-nucleosome topology). Acts as a negative regulator of cell proliferation.

## References

---

Xue Y.,et al.Proc. Natl. Acad. Sci. U.S.A. 97:13015-13020(2000).

Horikawa I.,et al.DNA Seq. 13:211-215(2002).

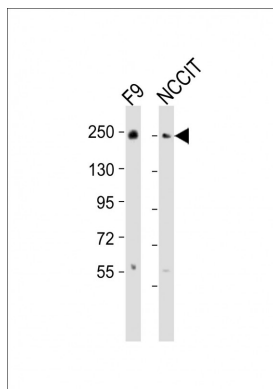
Sekine I.,et al.Oncogene 24:2735-2738(2005).

Ota T.,et al.Nat. Genet. 36:40-45(2004).

Lemon B.,et al.Nature 414:924-928(2001).

## Images

---



All lanes : Anti-PBRM1 Antibody (C-term) at 1:2000 dilution Lane 1: F9 whole cell lysates Lane 2: NCCIT whole cell lysates Lysates/proteins at 20 µg per lane. Secondary Goat Anti-Rabbit IgG, (H+L), Peroxidase conjugated at 1/10000 dilution Predicted band size : 193 kDa Blocking/Dilution buffer: 5% NFDM/TBST.

Please note: All products are 'FOR RESEARCH USE ONLY. NOT FOR USE IN DIAGNOSTIC OR THERAPEUTIC PROCEDURES'.