

ASH2L Antibody (Center)

Purified Rabbit Polyclonal Antibody (Pab)

Catalog # AP21332c

Product Information

Application	WB, E
Primary Accession	Q9UBL3
Reactivity	Human, Mouse
Host	Rabbit
Clonality	polyclonal
Isotype	Rabbit IgG
Clone Names	RB52789
Calculated MW	68723

Additional Information

Gene ID	9070
Other Names	Set1/Ash2 histone methyltransferase complex subunit ASH2, ASH2-like protein, ASH2L, ASH2L1
Target/Specificity	This ASH2L antibody is generated from a rabbit immunized with a KLH conjugated synthetic peptide between 347-382 amino acids from the Central region of human ASH2L.
Dilution	WB~~1:2000 E~~Use at an assay dependent concentration.
Format	Purified polyclonal antibody supplied in PBS with 0.09% (W/V) sodium azide. This antibody is purified through a protein A column, followed by peptide affinity purification.
Storage	Maintain refrigerated at 2-8°C for up to 2 weeks. For long term storage store at -20°C in small aliquots to prevent freeze-thaw cycles.
Precautions	ASH2L Antibody (Center) is for research use only and not for use in diagnostic or therapeutic procedures.

Protein Information

Name	ASH2L (HGNC:744)
Synonyms	ASH2L1
Function	Transcriptional regulator (PubMed: 12670868). Component or associated component of some histone methyltransferase complexes which regulates transcription through recruitment of those complexes to gene promoters

(PubMed:[19131338](#)). Component of the Set1/Ash2 histone methyltransferase (HMT) complex, a complex that specifically methylates 'Lys-4' of histone H3, but not if the neighboring 'Lys-9' residue is already methylated (PubMed:[19556245](#)). As part of the MLL1/MLL complex it is involved in methylation and dimethylation at 'Lys-4' of histone H3 (PubMed:[19556245](#)). May play a role in hematopoiesis (PubMed:[12670868](#)). In association with RBBP5 and WDR5, stimulates the histone methyltransferase activities of KMT2A, KMT2B, KMT2C, KMT2D, SETD1A and SETD1B (PubMed:[21220120](#), PubMed:[22266653](#)).

Cellular Location

Nucleus.

Tissue Location

Ubiquitously expressed. Predominantly expressed in adult heart and testis and fetal lung and liver, with barely detectable expression in adult lung, liver, kidney, prostate, and peripheral leukocytes.

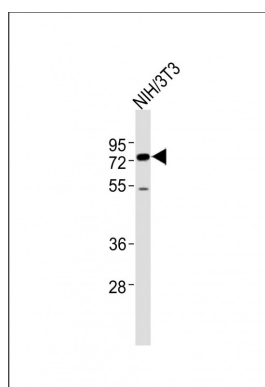
Background

Component of the Set1/Ash2 histone methyltransferase (HMT) complex, a complex that specifically methylates 'Lys-4' of histone H3, but not if the neighboring 'Lys-9' residue is already methylated. As part of the MLL1/MLL complex it is involved in methylation and dimethylation at 'Lys-4' of histone H3. May function as a transcriptional regulator. May play a role in hematopoiesis.

References

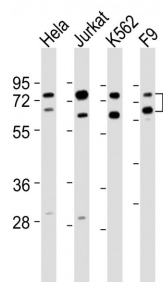
Wang J.,et al.J. Mol. Med. 79:399-405(2001).
 Ikegawa S.,et al.Cytogenet. Cell Genet. 84:167-172(1999).
 Ota T.,et al.Nat. Genet. 36:40-45(2004).
 Mural R.J.,et al.Submitted (SEP-2005) to the EMBL/GenBank/DDBJ databases.
 Wysocka J.,et al.Genes Dev. 17:896-911(2003).

Images



All lanes : Anti-ASH2L Antibody (Center) at 1:2000 dilution + NIH/3T3 whole cell lysates Lysates/proteins at 20 µg per lane. Secondary Goat Anti-Rabbit IgG, (H+L), Peroxidase conjugated at 1/10000 dilution Predicted band size : 69 kDa Blocking/Dilution buffer: 5% NFDM/TBST.

All lanes : Anti-ASH2L Antibody (Center) at 1:2000 dilution
 Lane 1: Hela whole cell lysates Lane 2: Jurkat whole cell lysates Lane 3: K562 whole cell lysates Lane 4: F9 whole cell lysates Lysates/proteins at 20 µg per lane. Secondary Goat Anti-Rabbit IgG, (H+L), Peroxidase conjugated at 1/10000 dilution Predicted band size : 69 kDa Blocking/Dilution buffer: 5% NFDM/TBST.



Please note: All products are 'FOR RESEARCH USE ONLY. NOT FOR USE IN DIAGNOSTIC OR THERAPEUTIC PROCEDURES'.