

AMZ1 Antibody (N-Term)

Purified Rabbit Polyclonal Antibody (Pab)

Catalog # AP21330a

Product Information

Application	WB, E
Primary Accession	Q400G9
Reactivity	Human
Host	Rabbit
Clonality	polyclonal
Isotype	Rabbit IgG
Clone Names	RB52726
Calculated MW	54924

Additional Information

Gene ID	155185
Other Names	Archaemetzincin-1, 34--, Archeobacterial metalloproteinase-like protein 1, AMZ1, KIAA1950
Target/Specificity	This AMZ1 antibody is generated from a rabbit immunized with a KLH conjugated synthetic peptide between 4-39 amino acids from the human region of human AMZ1.
Dilution	WB~~1:2000 E~~Use at an assay dependent concentration.
Format	Purified polyclonal antibody supplied in PBS with 0.09% (W/V) sodium azide. This antibody is purified through a protein A column, followed by peptide affinity purification.
Storage	Maintain refrigerated at 2-8°C for up to 2 weeks. For long term storage store at -20°C in small aliquots to prevent freeze-thaw cycles.
Precautions	AMZ1 Antibody (N-Term) is for research use only and not for use in diagnostic or therapeutic procedures.

Protein Information

Name	AMZ1
Synonyms	KIAA1950
Function	Probable zinc metalloprotease.

Background

Zinc metalloprotease. Exhibits aminopeptidase activity against neurogranin in vitro. Does not hydrolyze angiotensin-2.

References

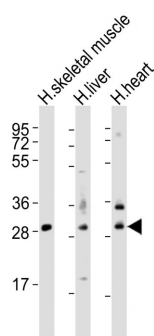
Diaz-Perales A.,et al.J. Biol. Chem. 280:30367-30375(2005).

Nagase T.,et al.DNA Res. 8:319-327(2001).

Ota T.,et al.Nat. Genet. 36:40-45(2004).

Hillier L.W.,et al.Nature 424:157-164(2003).

Images



All lanes : Anti-AMZ1 Antibody (N-Term) at 1:2000 dilution
Lane 1: human skeletal muscle lysates Lane 2: human liver lysates Lane 3: human heart lysates Lysates/proteins at 20 µg per lane. Secondary Goat Anti-Rabbit IgG, (H+L), Peroxidase conjugated at 1/10000 dilution Predicted band size : 55 kDa Blocking/Dilution buffer: 5% NFDM/TBST.

Please note: All products are 'FOR RESEARCH USE ONLY. NOT FOR USE IN DIAGNOSTIC OR THERAPEUTIC PROCEDURES'.