

# DPYSL5 Antibody (C-term)

Purified Rabbit Polyclonal Antibody (Pab)

Catalog # AP21325b

## Product Information

---

<b>Application</b>	WB, IHC-P, E
<b>Primary Accession</b>	<a href="#">Q9BPU6</a>
<b>Reactivity</b>	Human, Rat, Mouse
<b>Host</b>	Rabbit
<b>Clonality</b>	polyclonal
<b>Isotype</b>	Rabbit IgG
<b>Clone Names</b>	RB52632
<b>Calculated MW</b>	61421

## Additional Information

---

<b>Gene ID</b>	56896
<b>Other Names</b>	Dihydropyrimidinase-related protein 5, DRP-5, CRMP3-associated molecule, CRAM, Collapsin response mediator protein 5, CRMP-5, UNC33-like phosphoprotein 6, ULIP-6, DPYSL5, CRMP5, ULIP6
<b>Target/Specificity</b>	This DPYSL5 antibody is generated from a rabbit immunized with a KLH conjugated synthetic peptide between 521-554 amino acids from the C-terminal region of human DPYSL5.
<b>Dilution</b>	WB~~1:2000 IHC-P~~1:100~500 E~~Use at an assay dependent concentration.
<b>Format</b>	Purified polyclonal antibody supplied in PBS with 0.09% (W/V) sodium azide. This antibody is purified through a protein A column, followed by peptide affinity purification.
<b>Storage</b>	Maintain refrigerated at 2-8°C for up to 2 weeks. For long term storage store at -20°C in small aliquots to prevent freeze-thaw cycles.
<b>Precautions</b>	DPYSL5 Antibody (C-term) is for research use only and not for use in diagnostic or therapeutic procedures.

## Protein Information

---

<b>Name</b>	DPYSL5
<b>Synonyms</b>	CRMP5, ULIP6
<b>Function</b>	Involved in the negative regulation of dendrite outgrowth.

Cellular Location                      Cytoplasm.

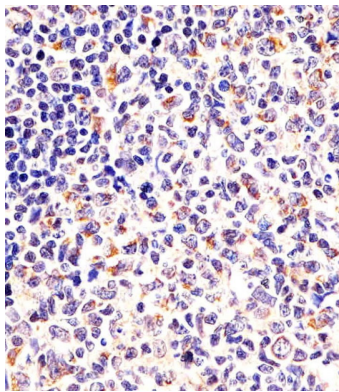
Background

May have a function in neuronal differentiation and/or axon growth.

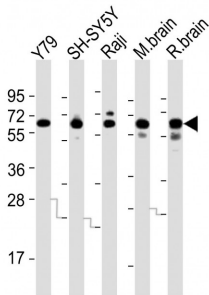
References

Aguera M.,et al.Submitted (MAY-2000) to the EMBL/GenBank/DDBJ databases.  
Horiuchi M.,et al.FEBS Lett. 480:283-286(2000).  
Yu Z.,et al.Ann. Neurol. 49:146-154(2001).  
Kalnine N.,et al.Submitted (MAY-2003) to the EMBL/GenBank/DDBJ databases.  
Lubec G.,et al.Submitted (DEC-2008) to UniProtKB.

Images



AP21325b staining DPYSL5 in human tonsil sections by Immunohistochemistry (IHC-P - paraformaldehyde-fixed, paraffin-embedded sections). Tissue was fixed with formaldehyde and blocked with 3% BSA for 0. 5 hour at room temperature; antigen retrieval was by heat mediation with a citrate buffer (pH6). Samples were incubated with primary antibody (1/25) for 1 hours at 37°C. A undiluted biotinylated goat polyvalent antibody was used as the secondary antibody.



All lanes : Anti-DPYSL5 Antibody (C-term) at 1:2000 dilution Lane 1: Y79 whole cell lysates Lane 2: SH-SY5Y whole cell lysates Lane 3: Raji whole cell lysates Lane 4: mouse brain lysates Lane 5: rat brain lysates Lysates/proteins at 20 µg per lane. Secondary Goat Anti-Rabbit IgG, (H+L), Peroxidase conjugated at 1/10000 dilution Predicted band size : 61 kDa Blocking/Dilution buffer: 5% NFDM/TBST.

Please note: All products are 'FOR RESEARCH USE ONLY. NOT FOR USE IN DIAGNOSTIC OR THERAPEUTIC PROCEDURES'.