

# CLEC11A Antibody

Purified Rabbit Polyclonal Antibody (Pab)

Catalog # AP21292a

## Product Information

---

<b>Application</b>	WB, E
<b>Primary Accession</b>	<a href="#">Q9Y240</a>
<b>Reactivity</b>	Human, Rat, Mouse
<b>Host</b>	Rabbit
<b>Clonality</b>	polyclonal
<b>Isotype</b>	Rabbit IgG
<b>Clone Names</b>	RB52475
<b>Calculated MW</b>	35695

## Additional Information

---

<b>Gene ID</b>	6320
<b>Other Names</b>	C-type lectin domain family 11 member A, C-type lectin superfamily member 3, Lymphocyte secreted C-type lectin, Stem cell growth factor, p47, CLEC11A, CLECSF3, LSLCL, SCGF
<b>Target/Specificity</b>	This CLEC11A antibody is generated from a rabbit immunized with a recombinant protein.
<b>Dilution</b>	WB~~1:2000 E~~Use at an assay dependent concentration.
<b>Format</b>	Purified polyclonal antibody supplied in PBS with 0.09% (W/V) sodium azide. This antibody is purified through a protein A column, followed by peptide affinity purification.
<b>Storage</b>	Maintain refrigerated at 2-8°C for up to 2 weeks. For long term storage store at -20°C in small aliquots to prevent freeze-thaw cycles.
<b>Precautions</b>	CLEC11A Antibody is for research use only and not for use in diagnostic or therapeutic procedures.

## Protein Information

---

<b>Name</b>	CLEC11A
<b>Synonyms</b>	CLECSF3, LSLCL, SCGF
<b>Function</b>	Promotes osteogenesis by stimulating the differentiation of mesenchymal progenitors into mature osteoblasts (PubMed: <a href="#">27976999</a> ). Important for repair and maintenance of adult bone (By similarity).

<b>Cellular Location</b>	Cytoplasm. Secreted
<b>Tissue Location</b>	Expressed in skeletal tissues including bone marrow, chondrocytes, primary ossification center-associated cells, the perichondrium and periosteum. Lower levels of expression were detected in spleen, thymus, appendix and fetal liver

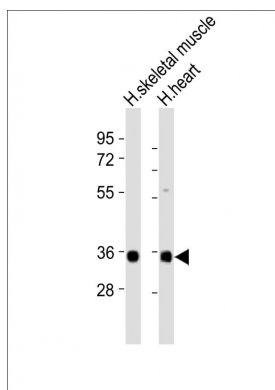
## Background

Stimulates the proliferation and differentiation of hematopoietic precursor cells from various lineages, including erythrocytes, lymphocytes, granulocytes and macrophages. Acts synergistically with other cytokines, including IL-3, GCSF, GMCSF and FLT3 ligand. Suppresses SCF-stimulated erythrocyte proliferation.

## References

Bannwarth S.,et al.J. Biol. Chem. 273:1911-1916(1998).  
Mio H.,et al.Biochem. Biophys. Res. Commun. 249:124-130(1998).  
Bannwarth S.,et al.Genomics 57:316-317(1999).  
Ota T.,et al.Nat. Genet. 36:40-45(2004).  
Mural R.J.,et al.Submitted (JUL-2005) to the EMBL/GenBank/DDBJ databases.

## Images



All lanes : Anti-CLEC11A Antibody at 1:2000 dilution Lane 1: human skeletal muscle lysates Lane 2: human heart lysates Lysates/proteins at 20 µg per lane. Secondary Goat Anti-Rabbit IgG, (H+L), Peroxidase conjugated at 1/10000 dilution Predicted band size : 36 kDa Blocking/Dilution buffer: 5% NFDM/TBST.

Please note: All products are 'FOR RESEARCH USE ONLY. NOT FOR USE IN DIAGNOSTIC OR THERAPEUTIC PROCEDURES'.