

# DBP Antibody (C-term)

Purified Rabbit Polyclonal Antibody (Pab)

Catalog # AP21269b

## Product Information

---

<b>Application</b>	WB, E
<b>Primary Accession</b>	<a href="#">Q10586</a>
<b>Reactivity</b>	Human, Rat, Mouse
<b>Host</b>	Rabbit
<b>Clonality</b>	polyclonal
<b>Isotype</b>	Rabbit IgG
<b>Clone Names</b>	RB51750
<b>Calculated MW</b>	34349

## Additional Information

---

<b>Gene ID</b>	1628
<b>Other Names</b>	D site-binding protein, Albumin D box-binding protein, Albumin D-element-binding protein, Tax-responsive enhancer element-binding protein 302, TaxREB302, DBP
<b>Target/Specificity</b>	This DBP antibody is generated from a rabbit immunized with a KLH conjugated synthetic peptide between 233-266 amino acids from the C-terminal region of human DBP.
<b>Dilution</b>	WB~~1:2000 E~~Use at an assay dependent concentration.
<b>Format</b>	Purified polyclonal antibody supplied in PBS with 0.09% (W/V) sodium azide. This antibody is purified through a protein A column, followed by peptide affinity purification.
<b>Storage</b>	Maintain refrigerated at 2-8°C for up to 2 weeks. For long term storage store at -20°C in small aliquots to prevent freeze-thaw cycles.
<b>Precautions</b>	DBP Antibody (C-term) is for research use only and not for use in diagnostic or therapeutic procedures.

## Protein Information

---

<b>Name</b>	DBP
<b>Function</b>	This transcriptional activator recognizes and binds to the sequence 5'-RTTAYGTAAY-3' found in the promoter of genes such as albumin, CYP2A4 and CYP2A5. It is not essential for circadian rhythm generation, but modulates important clock output genes. May be a direct target for regulation

by the circadian pacemaker component clock. May affect circadian period and sleep regulation.

**Cellular Location**

Nucleus.

**Tissue Location**

Ubiquitously expressed. Expressed in the suprachiasmatic nuclei (SCN) and in most peripheral tissues, with a strong circadian rhythmicity

## Background

---

This transcriptional activator recognizes and binds to the sequence 5'-RTTAYGTAA-3' found in the promoter of genes such as albumin, CYP2A4 and CYP2A5. It is not essential for circadian rhythm generation, but modulates important clock output genes. May be a direct target for regulation by the circadian pacemaker component clock. May affect circadian period and sleep regulation.

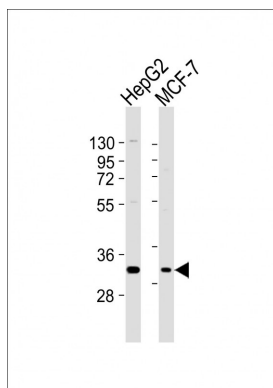
## References

---

Khatib Z.A.,et al.Genomics 23:344-351(1994).  
Shutler G.,et al.Genomics 34:334-339(1996).  
Yu W.,et al.Genome Res. 7:353-358(1997).  
Kalnina N.,et al.Submitted (MAY-2003) to the EMBL/GenBank/DDBJ databases.  
Mural R.J.,et al.Submitted (JUL-2005) to the EMBL/GenBank/DDBJ databases.

## Images

---



All lanes : Anti-DBP Antibody (C-term) at 1:2000 dilution  
Lane 1: HepG2 whole cell lysates Lane 2: MCF-7 whole cell lysates  
Lysates/proteins at 20 µg per lane. Secondary Goat Anti-Rabbit IgG, (H+L), Peroxidase conjugated at 1/10000 dilution  
Predicted band size : 34 kDa  
Blocking/Dilution buffer: 5% NFDM/TBST.

Please note: All products are 'FOR RESEARCH USE ONLY. NOT FOR USE IN DIAGNOSTIC OR THERAPEUTIC PROCEDURES'.