

PPP2R2A Antibody (N-term)

Purified Rabbit Polyclonal Antibody (Pab)

Catalog # AP21237a

Product Information

Application	WB, E
Primary Accession	P63151
Reactivity	Human, Rat, Mouse
Host	Rabbit
Clonality	polyclonal
Isotype	Rabbit IgG
Clone Names	RB52629
Calculated MW	51692

Additional Information

Gene ID	5520
Other Names	Serine/threonine-protein phosphatase 2A 55 kDa regulatory subunit B alpha isoform, PP2A subunit B isoform B55-alpha, PP2A subunit B isoform PR55-alpha, PP2A subunit B isoform R2-alpha, PP2A subunit B isoform alpha, PPP2R2A
Target/Specificity	This PPP2R2A antibody is generated from a rabbit immunized with a KLH conjugated synthetic peptide between 126-160 amino acids from the N-terminal region of human PPP2R2A.
Dilution	WB~~1:2000 E~~Use at an assay dependent concentration.
Format	Purified polyclonal antibody supplied in PBS with 0.09% (W/V) sodium azide. This antibody is purified through a protein A column, followed by peptide affinity purification.
Storage	Maintain refrigerated at 2-8°C for up to 2 weeks. For long term storage store at -20°C in small aliquots to prevent freeze-thaw cycles.
Precautions	PPP2R2A Antibody (N-term) is for research use only and not for use in diagnostic or therapeutic procedures.

Protein Information

Name	PPP2R2A
Function	Substrate-recognition subunit of protein phosphatase 2A (PP2A) that plays a key role in cell cycle by controlling mitosis entry and exit (PubMed: 1849734 , PubMed: 33108758). Involved in chromosome clustering during late mitosis by

mediating dephosphorylation of MKI67 (By similarity). Essential for serine/threonine-protein phosphatase 2A- mediated dephosphorylation of WEE1, preventing its ubiquitin-mediated proteolysis, increasing WEE1 protein levels, and promoting the G2/M checkpoint (PubMed:[33108758](#)).

Tissue Location

Expressed in all tissues examined.

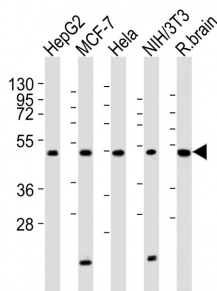
Background

The B regulatory subunit might modulate substrate selectivity and catalytic activity, and also might direct the localization of the catalytic enzyme to a particular subcellular compartment.

References

- Mayer R.E.,et al.Biochemistry 30:3589-3597(1991).
Ota T.,et al.Nat. Genet. 36:40-45(2004).
Nusbaum C.,et al.Nature 439:331-335(2006).
Mural R.J.,et al.Submitted (SEP-2005) to the EMBL/GenBank/DDBJ databases.
Li H.H.,et al.EMBO J. 26:402-411(2007).

Images



All lanes : Anti-PPP2R2A Antibody (N-term) at 1:2000 dilution Lane 1: HepG2 whole cell lysates Lane 2: MCF-7 whole cell lysates Lane 3: HeLa whole cell lysates Lane 4: NIH/3T3 whole cell lysates Lane 5: rat brain lysates Lysates/proteins at 20 µg per lane. Secondary Goat Anti-Rabbit IgG, (H+L), Peroxidase conjugated at 1/10000 dilution Predicted band size : 52 kDa Blocking/Dilution buffer: 5% NFDN/TBST.

Citations

- [PP2A-B55 and its adapter proteins IER2 and IER5 regulate the activity of RB family proteins and the expression of cell cycle-related genes](#)

Please note: All products are 'FOR RESEARCH USE ONLY. NOT FOR USE IN DIAGNOSTIC OR THERAPEUTIC PROCEDURES'.