

ATP2B3 Antibody (C-term)

Purified Rabbit Polyclonal Antibody (Pab)

Catalog # AP21234b

Product Information

Application	WB, IF, E
Primary Accession	Q16720
Reactivity	Human, Rat
Host	Rabbit
Clonality	polyclonal
Isotype	Rabbit IgG
Clone Names	RB52417
Calculated MW	134197

Additional Information

Gene ID	492
Target/Specificity	This ATP2B3 antibody is generated from a rabbit immunized with a KLH conjugated synthetic peptide between 1161-1194 amino acids from the C-terminal region of human ATP2B3.
Dilution	WB~~1:2000 IF~~1:25 E~~Use at an assay dependent concentration.
Format	Purified polyclonal antibody supplied in PBS with 0.09% (W/V) sodium azide. This antibody is purified through a protein A column, followed by peptide affinity purification.
Storage	Maintain refrigerated at 2-8°C for up to 2 weeks. For long term storage store at -20°C in small aliquots to prevent freeze-thaw cycles.
Precautions	ATP2B3 Antibody (C-term) is for research use only and not for use in diagnostic or therapeutic procedures.

Protein Information

Name	ATP2B3 {ECO:0000303 PubMed:8187550, ECO:0000312 HGNC:HGNC:816}
Function	ATP-driven Ca(2+) ion pump involved in the maintenance of basal intracellular Ca(2+) levels at the presynaptic terminals (PubMed: 18029012 , PubMed: 22912398 , PubMed: 25953895 , PubMed: 27035656). Uses ATP as an energy source to transport cytosolic Ca(2+) ions across the plasma membrane to the extracellular compartment (PubMed: 25953895 , PubMed: 27035656). May counter-transport protons, but the mechanism and the stoichiometry of this Ca(2+)/H(+) exchange remains to be established (By similarity).

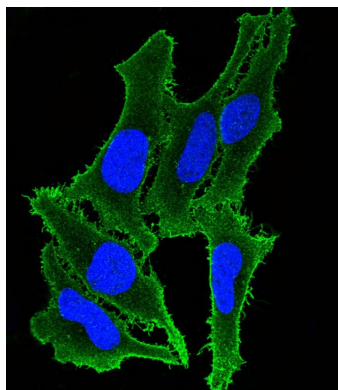
Cellular Location

Cell membrane; Multi-pass membrane protein. Presynaptic cell membrane {ECO:0000250|UniProtKB:Q64568}; Multi-pass membrane protein. Note=Localized at parallel fiber terminals {ECO:0000250|UniProtKB:Q64568}

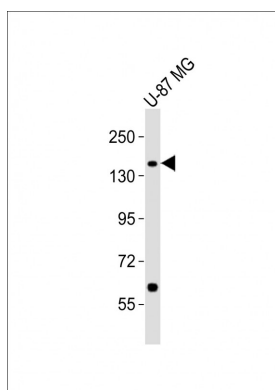
Tissue Location

Highly expressed in the cerebellum (PubMed:8187550). Expressed in adrenal glands (PubMed:27035656)

Images



Immunofluorescent analysis of 4% paraformaldehyde-fixed, 0.1% Triton X-100 permeabilized Hela (Human Cervical epithelial adenocarcinoma cell line) cells labeling ATP2B3 with AP21234b at 1/25 dilution, followed by Dylight® 488-conjugated goat anti-rabbit IgG (NK179883) secondary antibody at 1/200 dilution (green). Immunofluorescence image showing membrane staining on Hela cell line. The nuclear counter stain is DAPI (blue).



Anti-ATP2B3 Antibody (C-term) at 1:2000 dilution + U-87 MG whole cell lysates. Lysates/proteins at 20 µg per lane. Secondary Goat Anti-Rabbit IgG, (H+L), Peroxidase conjugated at 1/10000 dilution. Predicted band size : 134 kDa. Blocking/Dilution buffer: 5% NFDM/TBST.

Please note: All products are 'FOR RESEARCH USE ONLY. NOT FOR USE IN DIAGNOSTIC OR THERAPEUTIC PROCEDURES'.