

STAT5A Antibody (C-term)

Purified Rabbit Polyclonal Antibody (Pab)
Catalog # AP21232b

Product Information

Application	WB, IHC-P, E
Primary Accession	P42229
Reactivity	Human, Mouse, Rat
Host	Rabbit
Clonality	polyclonal
Isotype	Rabbit IgG
Clone Names	RB52392
Calculated MW	90647

Additional Information

Gene ID	6776
Target/Specificity	This STAT5A antibody is generated from a rabbit immunized with a KLH conjugated synthetic peptide between 763-797 amino acids from the C-terminal region of human STAT5A.
Dilution	WB~~1:2000 IHC-P~~1:100~500 E~~Use at an assay dependent concentration.
Format	Purified polyclonal antibody supplied in PBS with 0.09% (W/V) sodium azide. This antibody is purified through a protein A column, followed by peptide affinity purification.
Storage	Maintain refrigerated at 2-8°C for up to 2 weeks. For long term storage store at -20°C in small aliquots to prevent freeze-thaw cycles.
Precautions	STAT5A Antibody (C-term) is for research use only and not for use in diagnostic or therapeutic procedures.

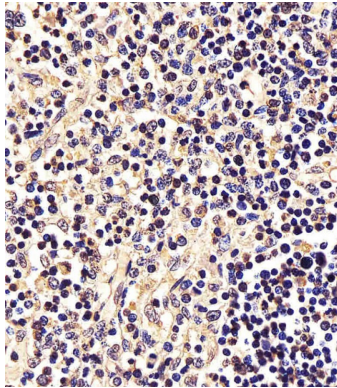
Protein Information

Name	STAT5A
Synonyms	STAT5
Function	Carries out a dual function: signal transduction and activation of transcription. Mediates cellular responses to the cytokine KITLG/SCF and other growth factors. Mediates cellular responses to ERBB4. May mediate cellular responses to activated FGFR1, FGFR2, FGFR3 and FGFR4. Binds to the GAS element and activates PRL- induced transcription. Regulates the expression of milk proteins during lactation.

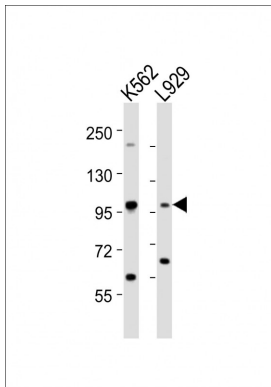
Cellular Location

Cytoplasm. Nucleus. Note=Translocated into the nucleus in response to phosphorylation

Images



AP21232b staining STAT5A in Human thymus tissue sections by Immunohistochemistry (IHC-P - paraformaldehyde-fixed, paraffin-embedded sections). Tissue was fixed with formaldehyde and blocked with 3% BSA for 0.5 hour at room temperature; antigen retrieval was by heat mediation with a citrate buffer (pH6). Samples were incubated with primary antibody (1/25) for 1 hours at 37°C. A undiluted biotinylated goat polyvalent antibody was used as the secondary antibody.



All lanes : Anti-STAT5A Antibody (C-term) at 1:2000 dilution Lane 1: K562 whole cell lysates Lane 2: L929 whole cell lysates Lysates/proteins at 20 µg per lane. Secondary Goat Anti-Rabbit IgG, (H+L), Peroxidase conjugated at 1/10000 dilution Predicted band size : 91 kDa Blocking/Dilution buffer: 5% NFDM/TBST.

Please note: All products are 'FOR RESEARCH USE ONLY. NOT FOR USE IN DIAGNOSTIC OR THERAPEUTIC PROCEDURES'.