

# EIF1 Antibody (C-term)

Purified Rabbit Polyclonal Antibody (Pab)  
Catalog # AP21122a

## Product Information

---

<b>Application</b>	WB, E
<b>Primary Accession</b>	<a href="#">P41567</a>
<b>Reactivity</b>	Human, Mouse
<b>Host</b>	Rabbit
<b>Clonality</b>	polyclonal
<b>Isotype</b>	Rabbit IgG
<b>Clone Names</b>	RB43570

## Additional Information

---

<b>Other Names</b>	Eukaryotic translation initiation factor 1, eIF1, A121, Protein translation factor SUI1 homolog, Sui1iso1, EIF1, SUI1
<b>Target/Specificity</b>	This EIF1 antibody is generated from a rabbit immunized with a KLH conjugated synthetic peptide between 100-133 amino acids from the C-terminal region of human EIF1.
<b>Dilution</b>	WB~~1:2000 E~~Use at an assay dependent concentration.
<b>Format</b>	Purified polyclonal antibody supplied in PBS with 0.09% (W/V) sodium azide. This antibody is purified through a protein A column, followed by peptide affinity purification.
<b>Storage</b>	Maintain refrigerated at 2-8°C for up to 2 weeks. For long term storage store at -20°C in small aliquots to prevent freeze-thaw cycles.
<b>Precautions</b>	EIF1 Antibody (C-term) is for research use only and not for use in diagnostic or therapeutic procedures.

## Protein Information

---

### Background

---

Necessary for scanning and involved in initiation site selection. Promotes the assembly of 48S ribosomal complexes at the authentic initiation codon of a conventional capped mRNA.

### References

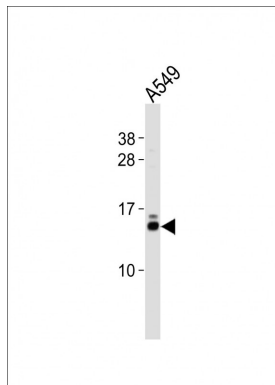
---

Fields C.A., et al. Biochem. Biophys. Res. Commun. 198:288-291(1994).

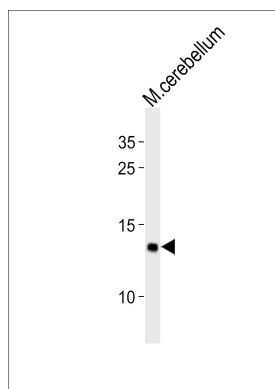
Singh S.K.,et al.Submitted (AUG-1998) to the EMBL/GenBank/DDBJ databases.  
Sheikh M.S.,et al.J. Biol. Chem. 274:16487-16493(1999).  
Mendell J.T.,et al.Mol. Cell. Biol. 20:8944-8957(2000).  
Gauci S.,et al.Anal. Chem. 81:4493-4501(2009).

## Images

---



Western blot analysis of lysate from A549 cell line, using EIF1 Antibody (C-term)(Cat. #AP21122a). AP21122a was diluted at 1:500. A goat anti-rabbit IgG H&L(HRP) at 1:10000 dilution was used as the secondary antibody. Lysate at 20ug.



Western blot analysis of lysates from mouse cerebellum tissue (from left to right), using EIF1 Antibody (C-term)(Cat. #AP21122a). AP21122a was diluted at 1:2000 at each lane. A goat anti-rabbit IgG H&L(HRP) at 1:10000 dilution was used as the secondary antibody.

Please note: All products are 'FOR RESEARCH USE ONLY. NOT FOR USE IN DIAGNOSTIC OR THERAPEUTIC PROCEDURES'.