

Mouse Nkx2-5 Antibody (Center)

Purified Rabbit Polyclonal Antibody (Pab)

Catalog # AP21109a

Product Information

Application	WB, E
Primary Accession	P42582
Reactivity	Human, Rat, Mouse
Host	Rabbit
Clonality	Polyclonal
Isotype	Rabbit IgG
Clone Names	RB51145

Additional Information

Other Names	Homeobox protein Nkx-25, Cardiac-specific homeobox, Homeobox protein CSX, Homeobox protein NK-2 homolog E, Nkx2-5, Csx, Nkx-25, Nkx2e
Target/Specificity	This mouse Nkx2-5 antibody is generated from a rabbit immunized with a KLH conjugated synthetic peptide between 192-235 amino acids from the Central region of mouse Nkx2-5.
Dilution	WB~~1:1000 E~~Use at an assay dependent concentration.
Format	Purified polyclonal antibody supplied in PBS with 0.09% (W/V) sodium azide. This antibody is purified through a protein A column, followed by peptide affinity purification.
Storage	Maintain refrigerated at 2-8°C for up to 2 weeks. For long term storage store at -20°C in small aliquots to prevent freeze-thaw cycles.
Precautions	Mouse Nkx2-5 Antibody (Center) is for research use only and not for use in diagnostic or therapeutic procedures.

Protein Information

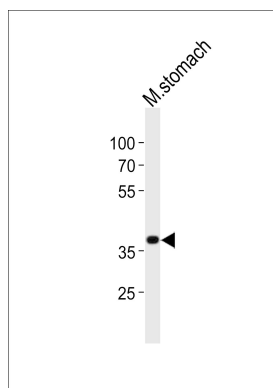
Background

Implicated in commitment to and/or differentiation of the myocardial lineage. Acts as a transcriptional activator of ANF in cooperation with GATA4. It is transcriptionally controlled by PBX1 and acts as a transcriptional repressor of CDKN2B. Together with PBX1, it is required for spleen development through a mechanism that involves CDKN2B repression.

References

Lints T.J.,et al.Development 119:419-431(1993).
Lints T.J.,et al.Development 119:969-969(1993).
Searcy R.D.,et al.Development 125:4461-4470(1998).
Komuro I.,et al.Proc. Natl. Acad. Sci. U.S.A. 90:8145-8149(1993).
Kim Y.H.,et al.J. Biol. Chem. 273:25875-25879(1998).

Images



Western blot analysis of lysate from mouse stomach tissue lysate, using Nkx2-5 Antibody (Center)(Cat. #AP21109a). AP21109a was diluted at 1:1000. A goat anti-rabbit IgG H&L(HRP) at 1:10000 dilution was used as the secondary antibody. Lysate at 20ug.

Please note: All products are 'FOR RESEARCH USE ONLY. NOT FOR USE IN DIAGNOSTIC OR THERAPEUTIC PROCEDURES'.