

TREX2 Antibody (C-term)

Purified Rabbit Polyclonal Antibody (Pab)

Catalog # AP21082a

Product Information

Application	WB, E
Primary Accession	Q9BQ50
Reactivity	Human, Mouse
Host	Rabbit
Clonality	Polyclonal
Isotype	Rabbit IgG
Clone Names	RB51418
Calculated MW	25922

Additional Information

Gene ID	11219
Other Names	Three prime repair exonuclease 2, 3'-5' exonuclease TREX2, TREX2
Target/Specificity	This TREX2 antibody is generated from a rabbit immunized with a KLH conjugated synthetic peptide between 264-299 amino acids from the C-terminal region of human TREX2.
Dilution	WB~~1:1000 E~~Use at an assay dependent concentration.
Format	Purified polyclonal antibody supplied in PBS with 0.09% (W/V) sodium azide. This antibody is purified through a protein A column, followed by peptide affinity purification.
Storage	Maintain refrigerated at 2-8°C for up to 2 weeks. For long term storage store at -20°C in small aliquots to prevent freeze-thaw cycles.
Precautions	TREX2 Antibody (C-term) is for research use only and not for use in diagnostic or therapeutic procedures.

Protein Information

Name	TREX2
Function	Exonuclease with a preference for double-stranded DNA with mismatched 3' termini. May play a role in DNA repair.
Cellular Location	Nucleus.
Tissue Location	Detected in heart, breast, prostate, skeletal muscle, testis, uterus, bone

marrow, colon, small intestine, stomach and thymus.

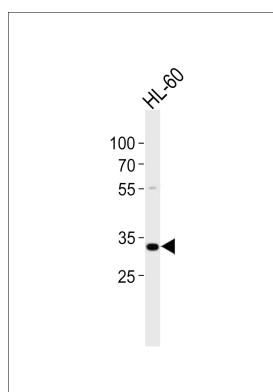
Background

Exonuclease with a preference for double-stranded DNA with mismatched 3' termini. May play a role in DNA repair.

References

Mazur D.J.,et al.J. Biol. Chem. 274:19655-19660(1999).
Mazur D.J.,et al.J. Biol. Chem. 276:14718-14727(2001).
Mazur D.J.,et al.J. Biol. Chem. 276:17022-17029(2001).
Perrino F.W.,et al.J. Biol. Chem. 280:15212-15218(2005).

Images



Western blot analysis of lysate from HL-60 cell line, using TREX2 Antibody (C-term)(Cat. #AP21082a). AP21082a was diluted at 1:1000. A goat anti-rabbit IgG H&L(HRP) at 1:10000 dilution was used as the secondary antibody. Lysate at 20ug.

Please note: All products are 'FOR RESEARCH USE ONLY. NOT FOR USE IN DIAGNOSTIC OR THERAPEUTIC PROCEDURES'.