

# (DANRE) map1lc3a Antibody (N-term)

Purified Rabbit Polyclonal Antibody (Pab)

Catalog # AP21076a

## Product Information

---

Application	WB, E
Primary Accession	<a href="#">Q6NX90</a>
Reactivity	Human, Mouse
Host	Rabbit
Clonality	Polyclonal
Isotype	Rabbit IgG
Clone Names	RB52005
Calculated MW	14328

## Additional Information

---

Gene ID	406466
Target/Specificity	This DANRE map1lc3a antibody is generated from a rabbit immunized with a KLH conjugated synthetic peptide between 18-51 amino acids from the N-terminal region of DANRE map1lc3a.
Dilution	WB~~1:1000 E~~Use at an assay dependent concentration.
Format	Purified polyclonal antibody supplied in PBS with 0.09% (W/V) sodium azide. This antibody is purified through a protein A column, followed by peptide affinity purification.
Storage	Maintain refrigerated at 2-8°C for up to 2 weeks. For long term storage store at -20°C in small aliquots to prevent freeze-thaw cycles.
Precautions	(DANRE) map1lc3a Antibody (N-term) is for research use only and not for use in diagnostic or therapeutic procedures.

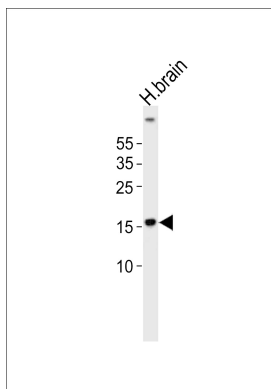
## Protein Information

---

Name	Q6NX90
Cellular Location	Cytoplasm, cytoskeleton {ECO:0000256 ARBA:ARBA00004245}. Cytoplasmic vesicle, autophagosome membrane {ECO:0000256 ARBA:ARBA00004512}; Lipid-anchor {ECO:0000256 ARBA:ARBA00004512}

## Images

---



Western blot analysis of lysate from human brain tissue, using DANRE map1lc3a Antibody (Nterm)(Cat. #AP21076a). AP21076a was diluted at 1:1000. A goat anti-rabbit IgG H&L(HRP) at 1:10000 dilution was used as the secondary antibody. Lysate at 20ug.

Please note: All products are 'FOR RESEARCH USE ONLY. NOT FOR USE IN DIAGNOSTIC OR THERAPEUTIC PROCEDURES'.