

ACAP2 Antibody (Center)

Purified Rabbit Polyclonal Antibody (Pab)
Catalog # AP21049a

Product Information

Application	WB, E
Primary Accession	Q15057
Reactivity	Human, Rat, Mouse
Host	Rabbit
Clonality	Polyclonal
Isotype	Rabbit IgG
Clone Names	RB51552
Calculated MW	88029

Additional Information

Gene ID	23527
Other Names	Arf-GAP with coiled-coil, ANK repeat and PH domain-containing protein 2, Centaurin-beta-2, Cnt-b2, ACAP2, CENTB2, KIAA0041
Target/Specificity	This ACAP2 antibody is generated from a rabbit immunized with a KLH conjugated synthetic peptide between 489-522 amino acids from the Central region of human ACAP2.
Dilution	WB~~1:1000 E~~Use at an assay dependent concentration.
Format	Purified polyclonal antibody supplied in PBS with 0.09% (W/V) sodium azide. This antibody is purified through a protein A column, followed by peptide affinity purification.
Storage	Maintain refrigerated at 2-8°C for up to 2 weeks. For long term storage store at -20°C in small aliquots to prevent freeze-thaw cycles.
Precautions	ACAP2 Antibody (Center) is for research use only and not for use in diagnostic or therapeutic procedures.

Protein Information

Name	ACAP2
Synonyms	CENTB2, KIAA0041
Function	GTPase-activating protein (GAP) for ADP ribosylation factor 6 (ARF6). Doesn't show GAP activity for RAB35 (PubMed: 30905672).

Cellular Location Cell membrane. Endosome membrane; Peripheral membrane protein.
Note=Colocalizes with RAB35 at the membrane protrusions of HEK293T cells.

Tissue Location Widely expressed. Highest level in lung.

Background

GTPase-activating protein (GAP) for ADP ribosylation factor 6 (ARF6).

References

Jackson T.R.,et al.J. Cell Biol. 151:627-638(2000).

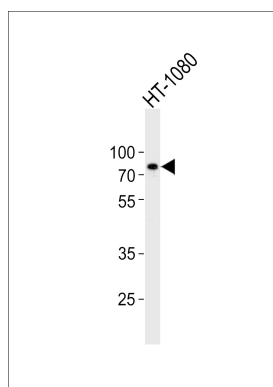
Nomura N.,et al.DNA Res. 1:223-229(1994).

Ohara O.,et al.Submitted (JAN-2003) to the EMBL/GenBank/DDBJ databases.

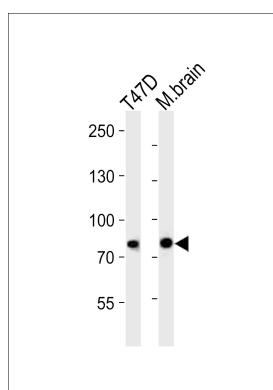
Ota T.,et al.Nat. Genet. 36:40-45(2004).

Mural R.J.,et al.Submitted (SEP-2005) to the EMBL/GenBank/DDBJ databases.

Images



Western blot analysis of lysate from HT-1080 cell line, using ACAP2 Antibody (Center)(Cat. #AP21049a). AP21049a was diluted at 1:1000. A goat anti-rabbit IgG H&L(HRP) at 1:10000 dilution was used as the secondary antibody. Lysate at 20ug.



Western blot analysis of lysates from T47D cell line and mouse brain tissue (from left to right), using ACAP2 Antibody (Center)(Cat. #AP21049a). AP21049a was diluted at 1:1000 at each lane. A goat anti-rabbit IgG H&L(HRP) at 1:10000 dilution was used as the secondary antibody. Lysates at 20ug per lane.

Please note: All products are 'FOR RESEARCH USE ONLY. NOT FOR USE IN DIAGNOSTIC OR THERAPEUTIC PROCEDURES'.