

SULT1A1 Antibody (C-term)

Purified Rabbit Polyclonal Antibody (Pab)

Catalog # AP21048a

Product Information

Application	WB, FC, E
Primary Accession	P50225
Reactivity	Human
Host	Rabbit
Clonality	Polyclonal
Isotype	Rabbit IgG
Clone Names	RB51774

Additional Information

Other Names	Sulfotransferase 1A1, ST1A1, Aryl sulfotransferase 1, HAST1/HAST2, Phenol sulfotransferase 1, Phenol-sulfating phenol sulfotransferase 1, P-PST 1, ST1A3, Thermostable phenol sulfotransferase, Ts-PST, SULT1A1, STP, STP1
Target/Specificity	This SULT1A1 antibody is generated from a rabbit immunized with a KLH conjugated synthetic peptide between 246-279 amino acids of human SULT1A1.
Dilution	WB~~1:1000 FC~~1:25 E~~Use at an assay dependent concentration.
Format	Purified polyclonal antibody supplied in PBS with 0.09% (W/V) sodium azide. This antibody is purified through a protein A column, followed by peptide affinity purification.
Storage	Maintain refrigerated at 2-8°C for up to 2 weeks. For long term storage store at -20°C in small aliquots to prevent freeze-thaw cycles.
Precautions	SULT1A1 Antibody (C-term) is for research use only and not for use in diagnostic or therapeutic procedures.

Protein Information

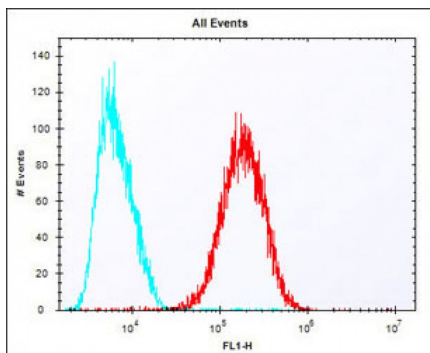
Background

Sulfotransferase that utilizes 3'-phospho-5'-adenylyl sulfate (PAPS) as sulfonate donor to catalyze the sulfate conjugation of catecholamines, phenolic drugs and neurotransmitters. Has also estrogen sulfotransferase activity. responsible for the sulfonation and activation of minoxidil. Is Mediates the metabolic activation of carcinogenic N- hydroxyarylamines to DNA binding products and could so participate as modulating factor of cancer risk.

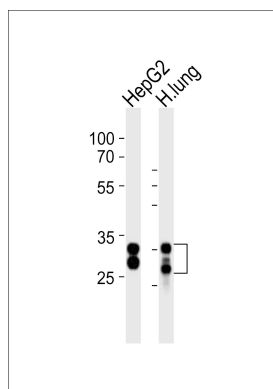
References

Zhu X., et al. *Biochem. Biophys. Res. Commun.* 195:120-127(1993).
Zhu X., et al. *Biochem. Biophys. Res. Commun.* 192:671-676(1993).
Wilborn T.W., et al. *Mol. Pharmacol.* 43:70-77(1993).
Yamazoe Y., et al. *Chem. Biol. Interact.* 92:107-117(1994).
Hwang S.-R., et al. *Biochem. Biophys. Res. Commun.* 207:701-707(1995).

Images



Overlay histogram showing HepG2 cells stained with AP21048a (red line). The cells were fixed with 2% paraformaldehyde (10 min) and then permeabilized with 90% methanol for 10 min. The cells were then incubated in 2% bovine serum albumin to block non-specific protein-protein interactions followed by the antibody (AP21048a, 1:25 dilution) for 60 min at 37°C. The secondary antibody used was Alexa Fluor® 488 goat anti-rabbit IgG (H+L) (1583138) at 1/400 dilution for 40 min at 37°C. Isotype control antibody (blue line) was rabbit IgG1 ($1\mu\text{g}/1\times 10^6$ cells) used under the same conditions. Acquisition of >10,000 events was performed.



Western blot analysis of lysates from HepG2 cell line and human lung tissue (from left to right), using SULT1A1 Antibody (C-term)(Cat. #AP21048a). AP21048a was diluted at 1:1000 at each lane. A goat anti-rabbit IgG H&L(HRP) at 1:10000 dilution was used as the secondary antibody. Lysates at 20ug per lane.

Please note: All products are 'FOR RESEARCH USE ONLY. NOT FOR USE IN DIAGNOSTIC OR THERAPEUTIC PROCEDURES'.