

Mouse Olig1 Antibody (Center)

Purified Rabbit Polyclonal Antibody (Pab)

Catalog # AP21010a

Product Information

Application	WB, E
Primary Accession	Q9JKN5
Reactivity	Human, Rat, Mouse
Host	Rabbit
Clonality	Polyclonal
Isotype	Rabbit IgG
Clone Names	RB51495
Calculated MW	27141

Additional Information

Gene ID	50914
Other Names	Oligodendrocyte transcription factor 1, Oligo1, Oligodendrocyte-specific bHLH transcription factor 1, Olig1
Target/Specificity	This Mouse Olig1 antibody is generated from a rabbit immunized with a KLH conjugated synthetic peptide between 161-184 amino acids from the Central region of Mouse Olig1.
Dilution	WB~~1:1000 E~~Use at an assay dependent concentration.
Format	Purified polyclonal antibody supplied in PBS with 0.09% (W/V) sodium azide. This antibody is purified through a protein A column, followed by peptide affinity purification.
Storage	Maintain refrigerated at 2-8°C for up to 2 weeks. For long term storage store at -20°C in small aliquots to prevent freeze-thaw cycles.
Precautions	Mouse Olig1 Antibody (Center) is for research use only and not for use in diagnostic or therapeutic procedures.

Protein Information

Name	Olig1
Function	Promotes formation and maturation of oligodendrocytes, especially within the brain. Cooperates with OLIG2 to establish the pMN domain of the embryonic neural tube.
Cellular Location	Nucleus {ECO:0000255 PROSITE-ProRule:PRU00981}.

Tissue Location

Expressed specifically in brain.

Background

Promotes formation and maturation of oligodendrocytes, especially within the brain. Cooperates with OLIG2 to establish the pMN domain of the embryonic neural tube.

References

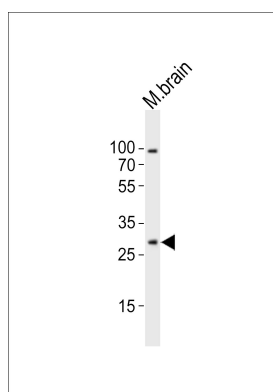
Takebayashi H.,et al.Mech. Dev. 99:143-148(2000).

Zhou Q.,et al.Neuron 25:331-343(2000).

Lu Q.R.,et al.Neuron 25:317-329(2000).

Lu Q.R.,et al.Cell 109:75-86(2002).

Images



Western blot analysis of lysate from mouse brain tissue lysate, using Olig1 Antibody (Center)(Cat. #AP21010a). AP21010a was diluted at 1:1000. A goat anti-rabbit IgG H&L(HRP) at 1:10000 dilution was used as the secondary antibody. Lysate at 20ug.

Please note: All products are 'FOR RESEARCH USE ONLY. NOT FOR USE IN DIAGNOSTIC OR THERAPEUTIC PROCEDURES'.