

Mouse Ephb1 Antibody (Center)

Purified Rabbit Polyclonal Antibody (Pab)

Catalog # AP20994a

Product Information

Application	WB, E
Primary Accession	Q8CBF3
Reactivity	Human, Rat, Mouse
Host	Rabbit
Clonality	Polyclonal
Isotype	Rabbit IgG
Clone Names	RB50839

Additional Information

Other Names	Ephrin type-B receptor 1, Ephb1
Target/Specificity	This Mouse Ephb1 antibody is generated from a rabbit immunized with a KLH conjugated synthetic peptide between 374-409 amino acids from the Central region of Mouse Ephb1.
Dilution	WB~~1:1000 E~~Use at an assay dependent concentration.
Format	Purified polyclonal antibody supplied in PBS with 0.09% (W/V) sodium azide. This antibody is purified through a protein A column, followed by peptide affinity purification.
Storage	Maintain refrigerated at 2-8°C for up to 2 weeks. For long term storage store at -20°C in small aliquots to prevent freeze-thaw cycles.
Precautions	Mouse Ephb1 Antibody (Center) is for research use only and not for use in diagnostic or therapeutic procedures.

Protein Information

Background

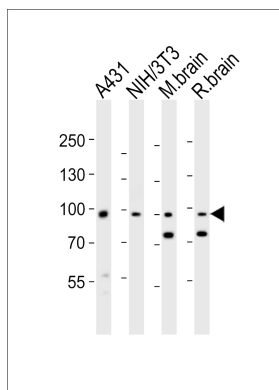
Receptor tyrosine kinase which binds promiscuously transmembrane ephrin-B family ligands residing on adjacent cells, leading to contact-dependent bidirectional signaling into neighboring cells. The signaling pathway downstream of the receptor is referred to as forward signaling while the signaling pathway downstream of the ephrin ligand is referred to as reverse signaling. Cognate/functional ephrin ligands for this receptor include EFNB1, EFNB2 and EFNB3. During nervous system development, regulates retinal axon guidance redirecting ipsilaterally ventrotemporal retinal ganglion cells axons at the optic chiasm midline. This probably requires repulsive interaction with EFNB2. In the adult nervous system together with EFNB3, regulates chemotaxis, proliferation and polarity of the hippocampus neural progenitors. Beside its role in

axon guidance plays also an important redundant role with other ephrin-B receptors in development and maturation of dendritic spines and synapse formation. May also regulate angiogenesis. More generally, may play a role in targeted cell migration and adhesion. Upon activation by EFNB1 and probably other ephrin-B ligands activates the MAPK/ERK and the JNK signaling cascades to regulate cell migration and adhesion respectively.

References

Carninci P., et al. *Science* 309:1559-1563(2005).
Church D.M., et al. *PLoS Biol.* 7:E1000112-E1000112(2009).
Stein E., et al. *J. Biol. Chem.* 273:1303-1308(1998).
Torres R., et al. *Neuron* 21:1453-1463(1998).
Han D.C., et al. *J. Biol. Chem.* 277:45655-45661(2002).

Images



Western blot analysis of lysates from A431, mouse NIH/3T3 cell line, mouse brain, rat brain tissue lysate(from left to right), using Ephb1 Antibody (Center)(Cat. #AP20994a). AP20994a was diluted at 1:1000 at each lane. A goat anti-rabbit IgG H&L(HRP) at 1:10000 dilution was used as the secondary antibody. Lysates at 20ug per lane.

Please note: All products are 'FOR RESEARCH USE ONLY. NOT FOR USE IN DIAGNOSTIC OR THERAPEUTIC PROCEDURES'.