

Mouse Insrr Antibody (C-term)

Purified Rabbit Polyclonal Antibody (Pab)

Catalog # AP20858c

Product Information

Application	WB, E
Primary Accession	Q9WTL4
Reactivity	Rat, Mouse
Host	Rabbit
Clonality	Polyclonal
Isotype	Rabbit IgG
Clone Names	RB50476
Calculated MW	144875

Additional Information

Gene ID	23920
Other Names	Insulin receptor-related protein, IRR, IR-related receptor, Insulin receptor-related protein alpha chain, Insulin receptor-related protein beta chain, Insrr, Irr
Target/Specificity	This Mouse Insrr antibody is generated from a rabbit immunized with a KLH conjugated synthetic peptide between 1265-1295 amino acids from the C-terminal region of Mouse Insrr.
Dilution	WB~~1:1000 E~~Use at an assay dependent concentration.
Format	Purified polyclonal antibody supplied in PBS with 0.09% (W/V) sodium azide. This antibody is purified through a protein A column, followed by peptide affinity purification.
Storage	Maintain refrigerated at 2-8°C for up to 2 weeks. For long term storage store at -20°C in small aliquots to prevent freeze-thaw cycles.
Precautions	Mouse Insrr Antibody (C-term) is for research use only and not for use in diagnostic or therapeutic procedures.

Protein Information

Name	Insrr
Synonyms	Irr
Function	Receptor with tyrosine-protein kinase activity. Functions as a pH sensing receptor which is activated by increased extracellular pH. Activates an

intracellular signaling pathway that involves IRS1 and AKT1/PKB.

Cellular Location

Membrane; Single-pass type I membrane protein

Tissue Location

Highly expressed in the islets as well as in pancreatic beta-cells.

Background

Receptor with tyrosine-protein kinase activity. Functions as a pH sensing receptor which is activated by increased extracellular pH. Activates an intracellular signaling pathway that involves IRS1 and AKT1/PKB.

References

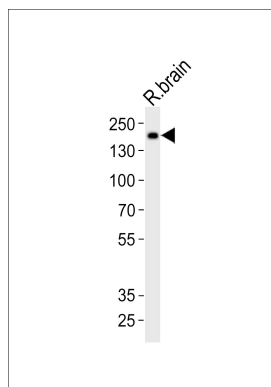
Hirayama I.,et al.Diabetes 48:1237-1244(1999).

Mural R.J.,et al.Submitted (JUL-2005) to the EMBL/GenBank/DDBJ databases.

Kitamura T.,et al.Mol. Cell. Biol. 21:5624-5630(2001).

Deyev I.E.,et al.Cell Metab. 13:679-689(2011).

Images



Western blot analysis of lysate from rat brain tissue, using Mouse Insrr Antibody (C-term)(Cat. #AP20858c). AP20858c was diluted at 1:1000. A goat anti-rabbit IgG H&L(HRP) at 1:10000 dilution was used as the secondary antibody. Lysate at 20ug.

Please note: All products are 'FOR RESEARCH USE ONLY. NOT FOR USE IN DIAGNOSTIC OR THERAPEUTIC PROCEDURES'.