

GBAS Antibody (Center)

Purified Rabbit Polyclonal Antibody (Pab)
Catalog # AP20821c

Product Information

Application	WB, E
Primary Accession	O75323
Reactivity	Human, Mouse
Host	Rabbit
Clonality	Polyclonal
Isotype	Rabbit IgG
Clone Names	RB50817

Additional Information

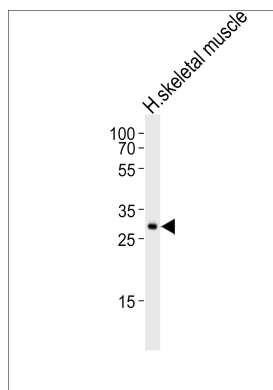
Other Names	Protein NipSnap homolog 2, NipSnap2, Glioblastoma-amplified sequence, GBAS, NIPSNAP2
Target/Specificity	This GBAS antibody is generated from a rabbit immunized with a KLH conjugated synthetic peptide between 176-210 amino acids from the Central region of human GBAS.
Dilution	WB~~1:1000 E~~Use at an assay dependent concentration.
Format	Purified polyclonal antibody supplied in PBS with 0.09% (W/V) sodium azide. This antibody is purified through a protein A column, followed by peptide affinity purification.
Storage	Maintain refrigerated at 2-8°C for up to 2 weeks. For long term storage store at -20°C in small aliquots to prevent freeze-thaw cycles.
Precautions	GBAS Antibody (Center) is for research use only and not for use in diagnostic or therapeutic procedures.

Protein Information

References

- Wang X.-Y., et al. Genomics 49:448-451(1998).
Seroussi E., et al. Gene 212:13-20(1998).
Kalnina N., et al. Submitted (OCT-2004) to the EMBL/GenBank/DDBJ databases.
Ota T., et al. Nat. Genet. 36:40-45(2004).
Ebert L., et al. Submitted (MAY-2004) to the EMBL/GenBank/DDBJ databases.

Images



Western blot analysis of lysate from human skeletal muscle tissue lysate, using GBAS Antibody (Center)(Cat. #AP20821c). AP20821c was diluted at 1:1000. A goat anti-rabbit IgG H&L(HRP) at 1:10000 dilution was used as the secondary antibody. Lysate at 35ug.

Citations

- [Mitochondrial proteins NIP-SNAP-1 and -2 are a target for the immunomodulatory activity of clarithromycin, which involves NF- \$\kappa\$ B-mediated cytokine production.](#)

Please note: All products are 'FOR RESEARCH USE ONLY. NOT FOR USE IN DIAGNOSTIC OR THERAPEUTIC PROCEDURES'.