

POLR2H Antibody (N-term)

Purified Rabbit Polyclonal Antibody (Pab)

Catalog # AP20815a

Product Information

Application	WB, E
Primary Accession	P52434
Reactivity	Human, Mouse
Host	Rabbit
Clonality	Polyclonal
Isotype	Rabbit IgG
Clone Names	RB49268
Calculated MW	17143

Additional Information

Gene ID	5437
Other Names	DNA-directed RNA polymerases I, II, and III subunit RPABC3, RNA polymerases I, II, and III subunit ABC3, DNA-directed RNA polymerase II subunit H, DNA-directed RNA polymerases I, II, and III 171 kDa polypeptide, RPB17, RPB8 homolog, hRPB8, POLR2H
Target/Specificity	This POLR2H antibody is generated from a rabbit immunized with a KLH conjugated synthetic peptide between 16-50 amino acids from the N-terminal region of human POLR2H.
Dilution	WB~~1:1000 E~~Use at an assay dependent concentration.
Format	Purified polyclonal antibody supplied in PBS with 0.09% (W/V) sodium azide. This antibody is purified through a protein A column, followed by peptide affinity purification.
Storage	Maintain refrigerated at 2-8°C for up to 2 weeks. For long term storage store at -20°C in small aliquots to prevent freeze-thaw cycles.
Precautions	POLR2H Antibody (N-term) is for research use only and not for use in diagnostic or therapeutic procedures.

Protein Information

Name	POLR2H (HGNC:9195)
Function	DNA-dependent RNA polymerase catalyzes the transcription of DNA into RNA using the four ribonucleoside triphosphates as substrates. Common component of RNA polymerases I, II and III which synthesize ribosomal RNA

precursors, mRNA precursors and many functional non- coding RNAs, and small RNAs, such as 5S rRNA and tRNAs, respectively.

Cellular Location

Nucleus {ECO:0000269 | PubMed:33335104, ECO:0000269 | PubMed:9852112, ECO:0000269 | Ref.6}. Nucleus, nucleolus

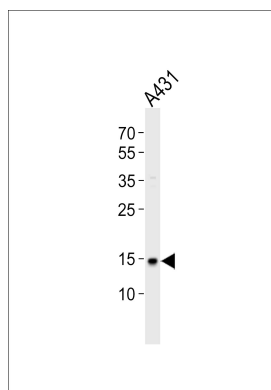
Background

DNA-dependent RNA polymerase catalyzes the transcription of DNA into RNA using the four ribonucleoside triphosphates as substrates. Common component of RNA polymerases I, II and III which synthesize ribosomal RNA precursors, mRNA precursors and many functional non-coding RNAs, and small RNAs, such as 5S rRNA and tRNAs, respectively.

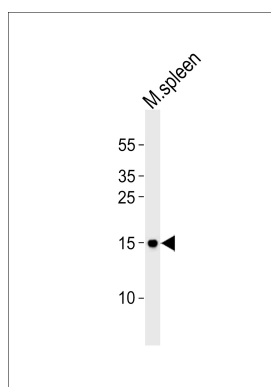
References

McKune K.,et al.Mol. Cell. Biol. 15:6895-6900(1995).
Shpakovski G.V.,et al.Mol. Cell. Biol. 15:4702-4710(1995).
Shpakovski G.V.,et al.Submitted (DEC-1999) to the EMBL/GenBank/DDBJ databases.
Bienvenut W.V.,et al.Submitted (AUG-2005) to UniProtKB.
Kershner E.,et al.J. Biol. Chem. 273:34444-34453(1998).

Images



Western blot analysis of lysate from A431 cell line, using POLR2H Antibody (N-term)(Cat. #AP20815a). AP20815a was diluted at 1:1000. A goat anti-rabbit IgG H&L(HRP) at 1:10000 dilution was used as the secondary antibody. Lysate at 20ug.



Western blot analysis of lysate from mouse spleen tissue lysate, using POLR2H Antibody (N-term)(Cat. #AP20815a). AP20815a was diluted at 1:1000. A goat anti-rabbit IgG H&L(HRP) at 1:10000 dilution was used as the secondary antibody. Lysate at 35ug.

Citations

- [Dysregulation of a novel miR-1825/TBCB/TUBA4A pathway in sporadic and familial ALS.](#)

Please note: All products are 'FOR RESEARCH USE ONLY. NOT FOR USE IN DIAGNOSTIC OR THERAPEUTIC PROCEDURES'.