

C1orf201 Antibody (C-term)

Purified Rabbit Polyclonal Antibody (Pab)

Catalog # AP20759c

Product Information

Application	WB, E
Primary Accession	Q5TH74
Reactivity	Human
Host	Rabbit
Clonality	Polyclonal
Isotype	Rabbit IgG
Clone Names	RB49873
Calculated MW	36786

Additional Information

Gene ID	90529
Other Names	O(6)-methylguanine-induced apoptosis 2, MAPO2, Sperm-tail PG-rich repeat-containing protein 1, STPG1, C1orf201
Target/Specificity	This C1orf201 antibody is generated from a rabbit immunized with a KLH conjugated synthetic peptide between 238-272 amino acids from the C-terminal region of human C1orf201.
Dilution	WB~~1:1000 E~~Use at an assay dependent concentration.
Format	Purified polyclonal antibody supplied in PBS with 0.09% (W/V) sodium azide. This antibody is purified through a protein A column, followed by peptide affinity purification.
Storage	Maintain refrigerated at 2-8°C for up to 2 weeks. For long term storage store at -20°C in small aliquots to prevent freeze-thaw cycles.
Precautions	C1orf201 Antibody (C-term) is for research use only and not for use in diagnostic or therapeutic procedures.

Protein Information

Name	STPG1
Synonyms	C1orf201
Function	May positively contribute to the induction of apoptosis triggered by O(6)-methylguanine.

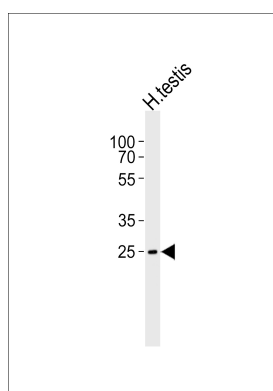
Background

May positively contribute to the induction of apoptosis triggered by O(6)-methylguanine.

References

Gregory S.G.,et al.Nature 441:315-321(2006).
Mayya V.,et al.Sci. Signal. 2:RA46-RA46(2009).
Fujikane R.,et al.PLoS ONE 7:E44817-E44817(2012).
Sjoebloom T.,et al.Science 314:268-274(2006).

Images



Western blot analysis of lysate from human testis tissue lysate, using C1orf201 Antibody (C-term)(Cat. #AP20759c). AP20759c was diluted at 1:1000. A goat anti-rabbit IgG H&L(HRP) at 1:5000 dilution was used as the secondary antibody. Lysate at 35ug.

Please note: All products are 'FOR RESEARCH USE ONLY. NOT FOR USE IN DIAGNOSTIC OR THERAPEUTIC PROCEDURES'.