

# NAPG Antibody (Center)

Purified Rabbit Polyclonal Antibody (Pab)

Catalog # AP20743c

## Product Information

---

<b>Application</b>	WB, E
<b>Primary Accession</b>	<a href="#">Q99747</a>
<b>Reactivity</b>	Human, Mouse
<b>Host</b>	Rabbit
<b>Clonality</b>	Polyclonal
<b>Isotype</b>	Rabbit IgG
<b>Clone Names</b>	RB50082
<b>Calculated MW</b>	34746

## Additional Information

---

<b>Gene ID</b>	8774
<b>Other Names</b>	Gamma-soluble NSF attachment protein, SNAP-gamma, N-ethylmaleimide-sensitive factor attachment protein gamma, NAPG, SNAPG
<b>Target/Specificity</b>	This NAPG antibody is generated from a rabbit immunized with a KLH conjugated synthetic peptide between 119-152 amino acids from the Central region of human NAPG.
<b>Dilution</b>	WB~~1:1000 E~~Use at an assay dependent concentration.
<b>Format</b>	Purified polyclonal antibody supplied in PBS with 0.09% (W/V) sodium azide. This antibody is purified through a protein A column, followed by peptide affinity purification.
<b>Storage</b>	Maintain refrigerated at 2-8°C for up to 2 weeks. For long term storage store at -20°C in small aliquots to prevent freeze-thaw cycles.
<b>Precautions</b>	NAPG Antibody (Center) is for research use only and not for use in diagnostic or therapeutic procedures.

## Protein Information

---

<b>Name</b>	NAPG ( <a href="#">HGNC:7642</a> )
<b>Function</b>	Required for vesicular transport between the endoplasmic reticulum and the Golgi apparatus.
<b>Cellular Location</b>	Membrane {ECO:0000250 UniProtKB:P81127}; Peripheral membrane protein {ECO:0000250 UniProtKB:P81127}. Golgi apparatus

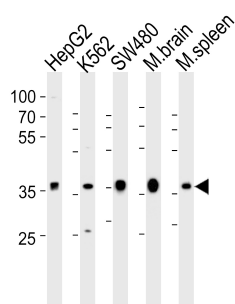
## Background

Required for vesicular transport between the endoplasmic reticulum and the Golgi apparatus.

## References

Lemons P.P.,et al.Blood 90:1490-1500(1997).  
Chen D.,et al.J. Biol. Chem. 276:13127-13135(2001).  
Rush J.,et al.Nat. Biotechnol. 23:94-101(2005).  
Dephoure N.,et al.Proc. Natl. Acad. Sci. U.S.A. 105:10762-10767(2008).  
Burkard T.R.,et al.BMC Syst. Biol. 5:17-17(2011).

## Images



Western blot analysis of lysates from HepG2, K562, SW480 cell line and mouse brain, spleen tissue lysate(from left to right), using NAPG Antibody (Center)(Cat. #AP20743c). AP20743c was diluted at 1:1000 at each lane. A goat anti-rabbit IgG H&L(HRP) at 1:5000 dilution was used as the secondary antibody. Lysates at 35ug per lane.

Please note: All products are 'FOR RESEARCH USE ONLY. NOT FOR USE IN DIAGNOSTIC OR THERAPEUTIC PROCEDURES'.